

## MSLN antibody

Catalog No: #38740

Package Size: #38740-1 50ul #38740-2 100ul

Orders: order@signalwayantibody.com

Support: tech@signalwayantibody.com

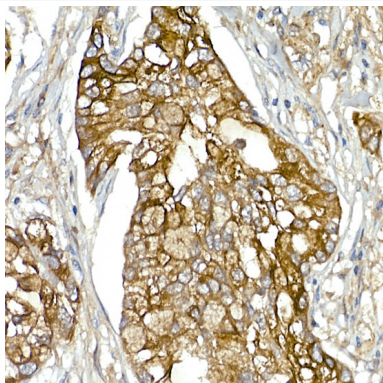
## Description

Product Name	MSLN antibody
Host Species	Rabbit
Clonality	Polyclonal
Isotype	IgG
Purification	Affinity purification
Applications	WB,IHC
Species Reactivity	Human,Rat
Specificity	The antibody detects endogenous level of total MSLN protein.
Immunogen Type	Recombinant Protein
Immunogen Description	Recombinant fusion protein of human MSLN (NP_001170826.1).
Target Name	MSLN
Other Names	MSLN;MPF;SMRP
Accession No.	Uniprot:Q13421GeneID:10232
Uniprot	Q13421
GeneID	10232
SDS-PAGE MW	Refer to figures
Concentration	1.0mg/ml
Formulation	PBS with 0.02% sodium azide,50% glycerol,pH7.3.
Storage	Store at -20°C. Avoid freeze / thaw cycles.

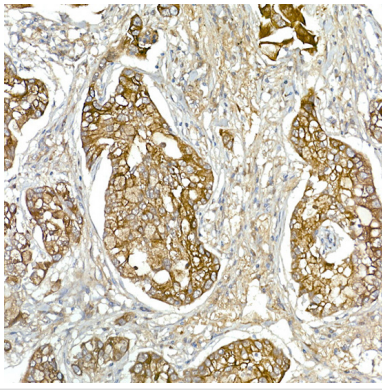
## Application Details

WB 1:500 - 1:2000 IHC 1:50 - 1:200

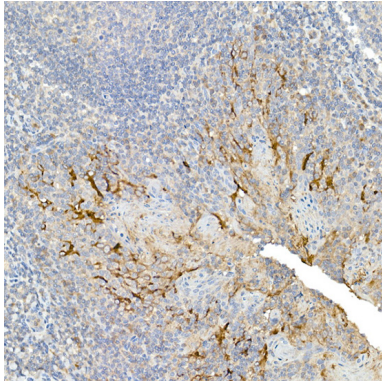
## Images



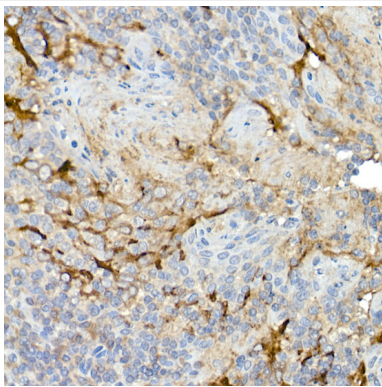
Immunohistochemistry of paraffin-embedded human lung cancer (400X) using MSLN Rabbit pAb.



Immunohistochemistry of paraffin-embedded human lung cancer at 200X magnification using MSLN Rabbit pAb.



Immunohistochemistry of paraffin-embedded Human tonsil at 200X magnification using MSLN Rabbit pAb.



Immunohistochemistry of paraffin-embedded Human tonsil at 400X magnification using MSLN Rabbit pAb.

## Background

This gene encodes a preproprotein that is proteolytically processed to generate two protein products, megakaryocyte potentiating factor and mesothelin. Megakaryocyte potentiating factor functions as a cytokine that can stimulate colony formation of bone marrow megakaryocytes. Mesothelin is a glycosylphosphatidylinositol-anchored cell-surface protein that may function as a cell adhesion protein. This protein is overexpressed in epithelial mesotheliomas, ovarian cancers and in specific squamous cell carcinomas. Alternative splicing results in multiple transcript variants, at least one of which encodes an isoform that is proteolytically processed.

Note: This product is for in vitro research use only