

SMYD5 antibody

Catalog No: #38742

Package Size: #38742-1 50ul #38742-2 100ul

Orders: order@signalwayantibody.comSupport: tech@signalwayantibody.com

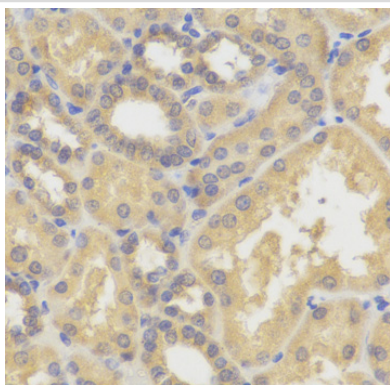
Description

Product Name	SMYD5 antibody
Host Species	Rabbit
Clonality	Polyclonal
Purification	Antibodies were purified by affinity purification using immunogen.
Applications	WB,IHC,IF
Species Reactivity	Human,Mouse
Specificity	The antibody detects endogenous level of total SMYD5 protein.
Immunogen Type	Recombinant Protein
Immunogen Description	Recombinant protein of human SMYD5.
Target Name	SMYD5
Other Names	RRG1; RAI15; NN8-4AG; ZMYND23
Accession No.	Swiss-Prot#: Q6GMV2NCBI Gene ID: 10322
Uniprot	Q6GMV2
GeneID	10322;
SDS-PAGE MW	47kd
Concentration	1.0mg/ml
Formulation	Supplied at 1.0mg/mL in phosphate buffered saline (without Mg ²⁺ and Ca ²⁺), pH 7.4, 150mM NaCl, 0.02% sodium azide and 50% glycerol.
Storage	Store at -20°C

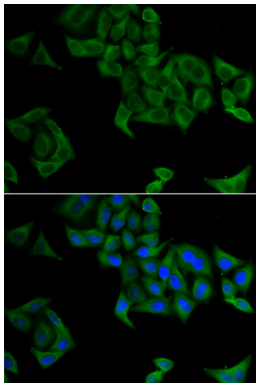
Application Details

WB □ 1:500 - 1:2000 IHC □ 1:50 - 1:100 IF □ 1:50 - 1:100

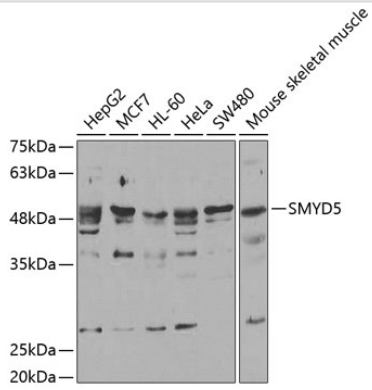
Images



Immunohistochemistry of paraffin-embedded human kidney using SMYD5 .



Immunofluorescence analysis of A549 cells using SMYD5 .
Blue: DAPI for nuclear staining.



Western blot analysis of extracts of various cell lines, using SMYD5 .

Background

Belongs to the class V-like SAM-binding methyltransferase superfamily.

Note: This product is for in vitro research use only