

## RNASE1 antibody

Catalog No: #38746

Package Size: #38746-1 50ul #38746-2 100ul

Orders: [order@signalwayantibody.com](mailto:order@signalwayantibody.com)Support: [tech@signalwayantibody.com](mailto:tech@signalwayantibody.com)

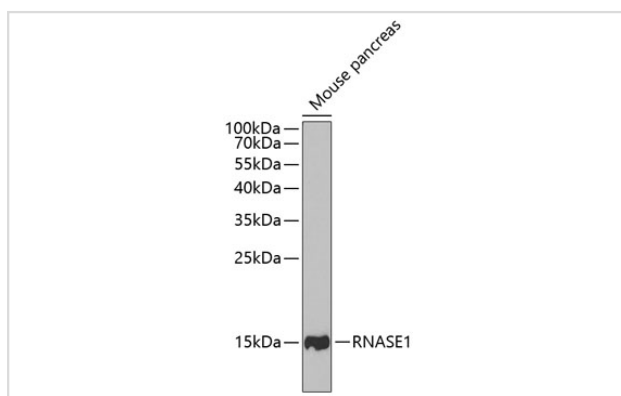
## Description

Product Name	RNASE1 antibody
Host Species	Rabbit
Clonality	Polyclonal
Purification	Antibodies were purified by affinity purification using immunogen.
Applications	WB
Species Reactivity	Mouse
Specificity	The antibody detects endogenous level of total RNASE1 protein.
Immunogen Type	Recombinant Protein
Immunogen Description	Recombinant protein of human RNASE1.
Target Name	RNASE1
Other Names	RAC1; RIB1; RNS1;
Accession No.	Swiss-Prot#: P07998NCBI Gene ID: 6035
Uniprot	P07998
GeneID	6035;
SDS-PAGE MW	17kd
Concentration	1.0mg/ml
Formulation	Supplied at 1.0mg/mL in phosphate buffered saline (without Mg <sup>2+</sup> and Ca <sup>2+</sup> ), pH 7.4, 150mM NaCl, 0.02% sodium azide and 50% glycerol.
Storage	Store at -20°C

## Application Details

WB □ 1:500 - 1:2000

## Images



Western blot analysis of extracts of mouse pancreas, using RNASE1 at 1:1000 dilution.

## Background

---

This gene encodes a member of the pancreatic-type of secretory ribonucleases, a subset of the ribonuclease A superfamily. The encoded endonuclease cleaves internal phosphodiester RNA bonds on the 3'-side of pyrimidine bases. It prefers poly(C) as a substrate and hydrolyzes 2',3'-cyclic nucleotides, with a pH optimum near 8.0. The encoded protein is monomeric and more commonly acts to degrade ds-RNA over ss-RNA. Alternative splicing occurs at this locus and four transcript variants encoding the same protein have been identified.

---

Note: This product is for in vitro research use only