

ATPase beta3(Na⁺/K⁺) antibody

Catalog No: #22364

Orders: order@signalwayantibody.com

Support: tech@signalwayantibody.com

Description

Product Name	ATPase beta3(Na ⁺ /K ⁺) antibody
Host Species	Rabbit
Clonality	Polyclonal
Purification	Purified by antigen-affinity chromatography.
Applications	WB IHC
Species Reactivity	Hu
Immunogen Type	Recombinant protein
Immunogen Description	Recombinant protein fragment contain a sequence corresponding to a region within amino acids 53 and 254 of ATPase beta3(Na ⁺ /K ⁺)
Target Name	ATPase beta3(Na ⁺ /K ⁺)
Accession No.	Swiss-Prot:P54709Gene ID:483
Uniprot	P54709
GeneID	483;
Concentration	0.3mg/ml
Formulation	Supplied in 0.1M Tris-buffered saline with 20% Glycerol (pH7.0). 0.01% Thimerosal was added as a preservative.
Storage	Store at -20°C for long term preservation (recommended). Store at 4°C for short term use.

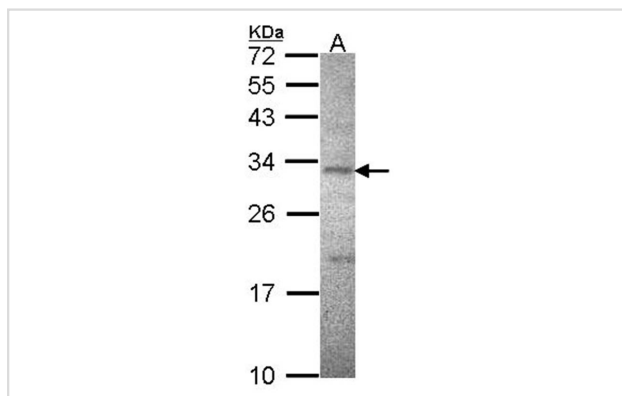
Application Details

Predicted MW: 32kd

Western blotting: 1:500-1:3000

Immunohistochemistry: 1:100-1:250

Images

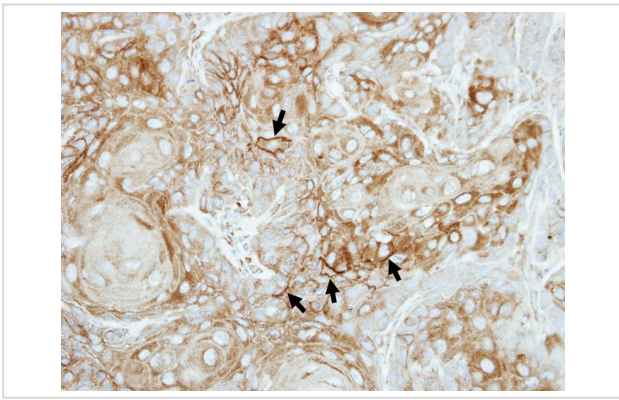


Sample (30 ug of whole cell lysate)

A: HeLa

12% SDS PAGE

ATPase beta3(Na⁺/K⁺) antibody diluted at 1: 1000



Immunohistochemical analysis of paraffin-embedded Ca922 xenograft, using ATPase beta3 (Na⁺/K⁺) antibody at 1: 100 dilution.

Background

The protein encoded by this gene belongs to the family of Na⁺/K⁺ and H⁺/K⁺ ATPases beta chain proteins, and to the subfamily of Na⁺/K⁺ -ATPases. Na⁺/K⁺ -ATPase is an integral membrane protein responsible for establishing and maintaining the electrochemical gradients of Na and K ions across the plasma membrane. These gradients are essential for osmoregulation, for sodium-coupled transport of a variety of organic and inorganic molecules, and for electrical excitability of nerve and muscle. This enzyme is composed of two subunits, a large catalytic subunit (alpha) and a smaller glycoprotein subunit (beta). The beta subunit regulates, through assembly of alpha/beta heterodimers, the number of sodium pumps transported to the plasma membrane. The glycoprotein subunit of Na⁺/K⁺ -ATPase is encoded by multiple genes. This gene encodes a beta 3 subunit. This gene encodes a beta 3 subunit. A pseudogene exists for this gene, and it is located on chromosome 2. [provided by RefSeq]

Note: This product is for in vitro research use only