

SERPINE1 antibody

Catalog No: #38751

Package Size: #38751-1 50ul #38751-2 100ul

Orders: order@signalwayantibody.com

Support: tech@signalwayantibody.com

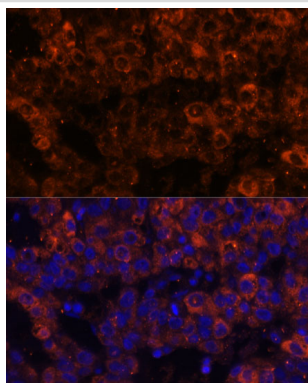
Description

Product Name	SERPINE1 antibody
Host Species	Rabbit
Clonality	Polyclonal
Purification	Antibodies were purified by affinity purification using immunogen.
Applications	WB,IF
Species Reactivity	Human,Mouse,Rat
Specificity	The antibody detects endogenous level of total SERPINE1 protein.
Immunogen Type	Recombinant Protein
Immunogen Description	Recombinant protein of human SERPINE1.
Target Name	SERPINE1
Other Names	PAI; PAI1; PAI-1; PLANH1;
Accession No.	Swiss-Prot#: P05121NCBI Gene ID: 5054
Uniprot	P05121
GeneID	5054;
SDS-PAGE MW	45kd
Concentration	1.0mg/ml
Formulation	Supplied at 1.0mg/mL in phosphate buffered saline (without Mg ²⁺ and Ca ²⁺), pH 7.4, 150mM NaCl, 0.02% sodium azide and 50% glycerol.
Storage	Store at -20°C

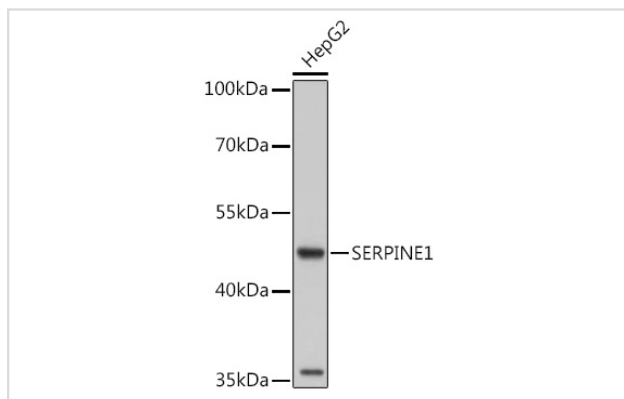
Application Details

WB □ 1:500 - 1:2000IF □ 1:50 - 1:200

Images



Immunofluorescence analysis of human liver cancer using SERPINE1 Polyclonal at dilution of 1:100 (40x lens). Blue: DAPI for nuclear staining.



Western blot analysis of extracts of HepG2 cells, using SERPINE1 at 1:1000 dilution.

Background

This gene encodes a member of the serine proteinase inhibitor (serpin) superfamily. This member is the principal inhibitor of tissue plasminogen activator (tPA) and urokinase (uPA), and hence is an inhibitor of fibrinolysis. Defects in this gene are the cause of plasminogen activator inhibitor-1 deficiency (PAI-1 deficiency), and high concentrations of the gene product are associated with thrombophilia. Alternatively spliced transcript variants encoding different isoforms have been found for this gene.

Note: This product is for in vitro research use only