

TAP1 antibody

Catalog No: #38753

Package Size: #38753-1 50ul #38753-2 100ul

Orders: order@signalwayantibody.comSupport: tech@signalwayantibody.com

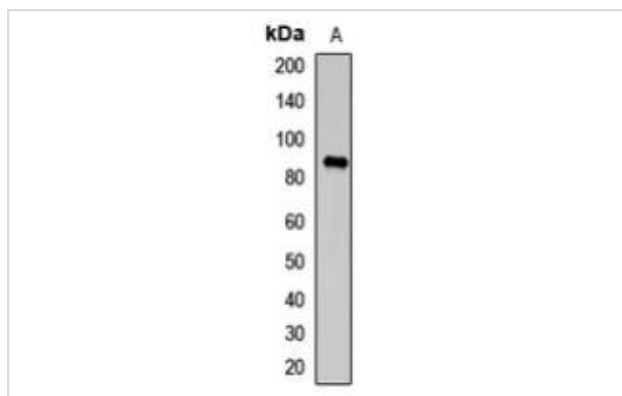
Description

Product Name	TAP1 antibody
Host Species	Rabbit
Clonality	Polyclonal
Isotype	IgG
Purification	Affinity purification
Applications	WB IHC
Species Reactivity	Human,Mouse
Specificity	The antibody detects endogenous level of TAP1 protein.
Immunogen Type	Recombinant Protein
Immunogen Description	Recombinant protein of human TAP1
Target Name	TAP1
Other Names	TAP1;ABC17;ABCB2;APT1;D6S114E;PSF-1;PSF1;RING4;TAP1*0102N;TAP1N
Accession No.	Uniprot:Q03518GeneID:6890
Uniprot	Q03518
GeneID	6890
SDS-PAGE MW	87kDa
Formulation	Liquid in 0.42% Potassium phosphate, 0.87% Sodium chloride, pH 7.3, 30% glycerol, and 0.01% sodium azide
Storage	Shipped at 4°C. Upon delivery aliquot and store at -20°C for one year. Avoid freeze/thaw cycles.

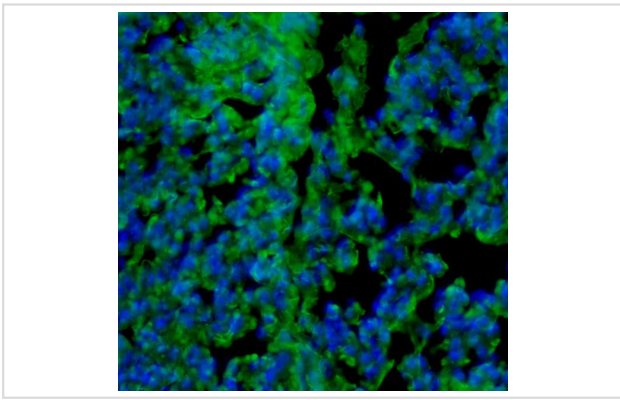
Application Details

WB 1:500 - 1:2000

Images



Western blot analysis of TAP1 expression in HepG2 (A) whole cell lysates.



Immunohistochemical analysis of mouse lung.

Background

The membrane-associated protein encoded by this gene is a member of the superfamily of ATP-binding cassette (ABC) transporters. ABC proteins transport various molecules across extra- and intra-cellular membranes. ABC genes are divided into seven distinct subfamilies (ABC1, MDR/TAP, MRP, ALD, OABP, GCN20, White). This protein is a member of the MDR/TAP subfamily. Members of the MDR/TAP subfamily are involved in multidrug resistance. The protein encoded by this gene is involved in the pumping of degraded cytosolic peptides across the endoplasmic reticulum into the membrane-bound compartment where class I molecules assemble. Mutations in this gene may be associated with ankylosing spondylitis, insulin-dependent diabetes mellitus, and celiac disease. Two transcript variants encoding different isoforms have been found for this gene.

Note: This product is for in vitro research use only