

## CBX8 antibody

Catalog No: #38758

Package Size: #38758-1 50ul #38758-2 100ul

Orders: [order@signalwayantibody.com](mailto:order@signalwayantibody.com)Support: [tech@signalwayantibody.com](mailto:tech@signalwayantibody.com)

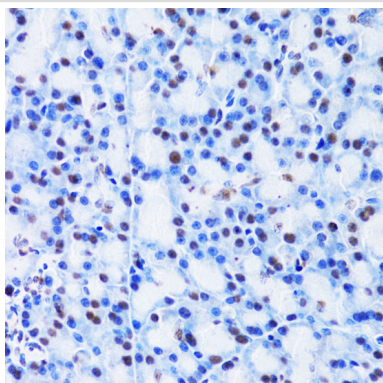
## Description

Product Name	CBX8 antibody
Host Species	Rabbit
Clonality	Polyclonal
Isotype	IgG
Purification	Affinity purification
Applications	WB,IHC
Species Reactivity	Human,Mouse,Rat
Specificity	The antibody detects endogenous level of total CBX8 protein.
Immunogen Type	Recombinant Protein
Immunogen Description	Recombinant fusion protein of human CBX8 (NP_065700.1).
Target Name	CBX8
Other Names	CBX8;PC3;RC1
Accession No.	Uniprot:Q9HC52GeneID:57332
Uniprot	Q9HC52
GeneID	57332
SDS-PAGE MW	50kDa
Concentration	1.0mg/ml
Formulation	PBS with 0.02% sodium azide,50% glycerol,pH7.3.
Storage	Store at -20°C. Avoid freeze / thaw cycles.

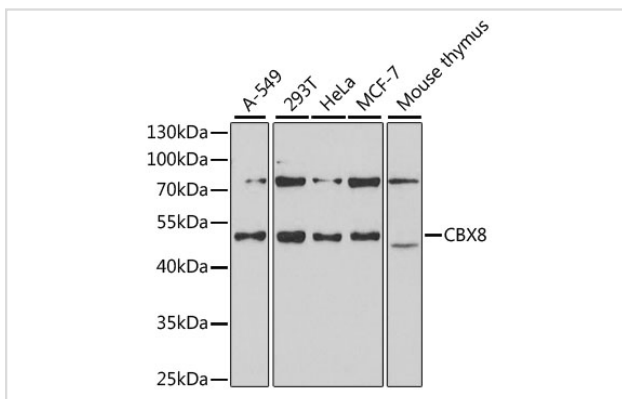
## Application Details

WB 1:500 - 1:2000 IHC 1:50 - 1:200

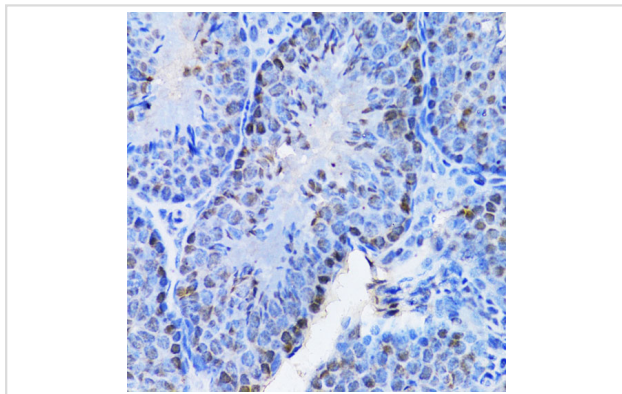
## Images



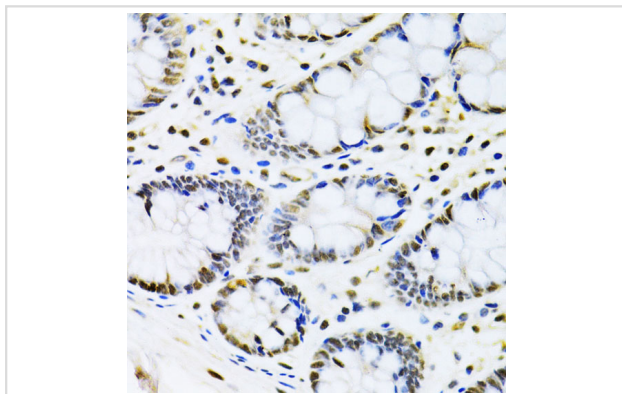
Immunohistochemistry of paraffin-embedded rat pancreas using CBX8 Antibody.



Western blot analysis of extracts of various cell lines, using CBX8 antibody.



Immunohistochemistry of paraffin-embedded mouse testis using CBX8 Antibody.



Immunohistochemistry of paraffin-embedded human colon using CBX8 Antibody.

## Background

Component of a Polycomb group (PcG multiprotein PRC1-like complex, a complex class required to maintain the transcriptionally repressive state of many genes, including Hox genes, throughout development. PcG PRC1 complex acts via chromatin remodeling and modification of histones; it mediates monoubiquitination of histone H2A 'Lys-119', rendering chromatin heritably changed in its expressibility.

Note: This product is for in vitro research use only