

ESD antibody

Catalog No: #38761

Package Size: #38761-1 50ul #38761-2 100ul

Orders: order@signalwayantibody.com

Support: tech@signalwayantibody.com

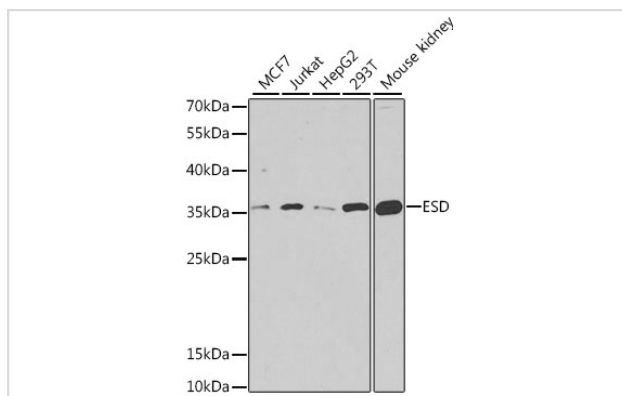
Description

Product Name	ESD antibody
Host Species	Rabbit
Clonality	Polyclonal
Purification	Antibodies were purified by affinity purification using immunogen.
Applications	WB,IHC
Species Reactivity	Human,Mouse
Specificity	The antibody detects endogenous level of total ESD protein.
Immunogen Type	Recombinant Protein
Immunogen Description	Recombinant protein of human ESD.
Target Name	ESD
Other Names	FGH;
Accession No.	Swiss-Prot#: P10768NCBI Gene ID: 2098
Uniprot	P10768
GeneID	2098;
SDS-PAGE MW	31kd
Concentration	1.0mg/ml
Formulation	Supplied at 1.0mg/mL in phosphate buffered saline (without Mg ²⁺ and Ca ²⁺), pH 7.4, 150mM NaCl, 0.02% sodium azide and 50% glycerol.
Storage	Store at -20°C

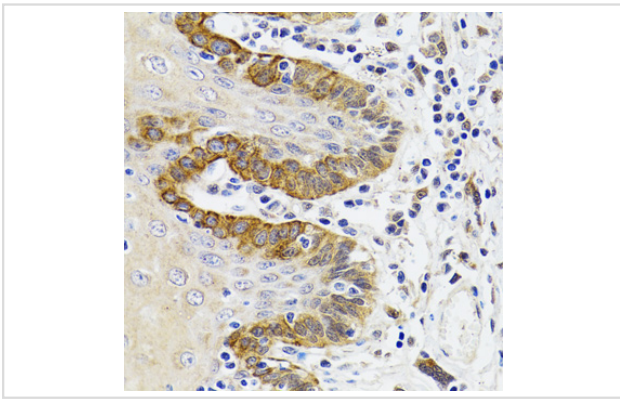
Application Details

WB □ 1:500 - 1:2000 IHC □ 1:50 - 1:200

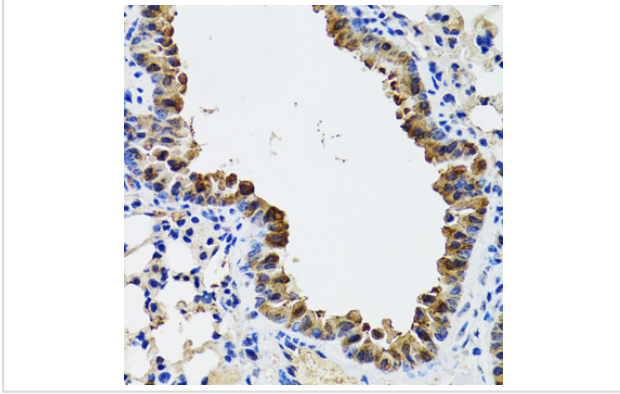
Images



Western blot analysis of extracts of various cell lines, using ESD at 1:1000 dilution.



Immunohistochemistry of paraffin-embedded Human trachea using ESD at dilution of 1:100 (40x lens).



Immunohistochemistry of paraffin-embedded mouse lung using ESD at dilution of 1:100 (40x lens).

Background

This gene encodes a serine hydrolase that belongs to the esterase D family. The encoded enzyme is active toward numerous substrates including O-acetylated sialic acids, and it may be involved in the recycling of sialic acids. This gene is used as a genetic marker for retinoblastoma and Wilson's disease.

Note: This product is for in vitro research use only