

LALBA antibody

Catalog No: #38764

Package Size: #38764-1 50ul #38764-2 100ul

Orders: order@signalwayantibody.com

Support: tech@signalwayantibody.com

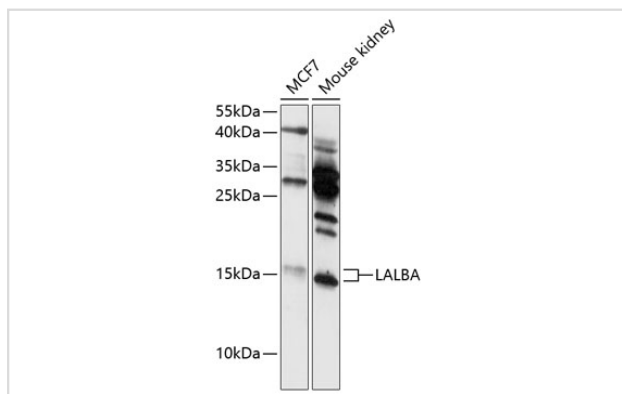
Description

Product Name	LALBA antibody
Host Species	Rabbit
Clonality	Polyclonal
Purification	Antibodies were purified by affinity purification using immunogen.
Applications	WB
Species Reactivity	Human, Mouse
Specificity	The antibody detects endogenous level of total LALBA protein.
Immunogen Type	Recombinant Protein
Immunogen Description	Recombinant protein of human LALBA.
Target Name	LALBA
Accession No.	Swiss-Prot#: P00709NCBI Gene ID: 3906
Uniprot	P00709
GeneID	3906;
SDS-PAGE MW	16kd
Concentration	1.0mg/ml
Formulation	Supplied at 1.0mg/mL in phosphate buffered saline (without Mg ²⁺ and Ca ²⁺), pH 7.4, 150mM NaCl, 0.02% sodium azide and 50% glycerol.
Storage	Store at -20°C

Application Details

WB □ 1:1000 - 1:2000

Images



Western blot analysis of extracts of various cell lines, using LALBA at 1:3000 dilution.

Background

This gene encodes alpha-lactalbumin, a principal protein of milk. Alpha-lactalbumin forms the regulatory subunit of the lactose synthase (LS)

heterodimer and beta 1,4-galactosyltransferase (beta4Gal-T1) forms the catalytic component. Together, these proteins enable LS to produce lactose by transferring galactose moieties to glucose. As a monomer, alpha-lactalbumin strongly binds calcium and zinc ions and may possess bactericidal or antitumor activity. A folding variant of alpha-lactalbumin, called HAMLET, likely induces apoptosis in tumor and immature cells.

Note: This product is for in vitro research use only