

NR2E3 antibody

Catalog No: #38765

Package Size: #38765-1 50ul #38765-2 100ul

Orders: order@signalwayantibody.com

Support: tech@signalwayantibody.com

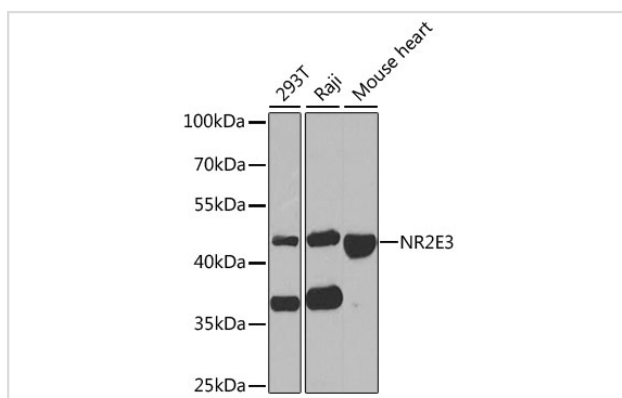
Description

Product Name	NR2E3 antibody
Host Species	Rabbit
Clonality	Polyclonal
Purification	Antibodies were purified by affinity purification using immunogen.
Applications	WB
Species Reactivity	Human,Mouse,Rat
Specificity	The antibody detects endogenous level of total NR2E3 protein.
Immunogen Type	Recombinant Protein
Immunogen Description	Recombinant protein of human NR2E3.
Target Name	NR2E3
Other Names	PNR; RNR; rd7; ESCS; RP37;
Accession No.	Swiss-Prot#: Q9Y5X4NCBI Gene ID: 10002
Uniprot	Q9Y5X4
GeneID	10002;
SDS-PAGE MW	44kd
Concentration	1.0mg/ml
Formulation	Supplied at 1.0mg/mL in phosphate buffered saline (without Mg ²⁺ and Ca ²⁺), pH 7.4, 150mM NaCl, 0.02% sodium azide and 50% glycerol.
Storage	Store at -20°C

Application Details

WB □ 1:500 - 1:2000

Images



Western blot analysis of extracts of various cell lines, using NR2E3 at 1:1000 dilution.

Background

This protein is part of a large family of nuclear receptor transcription factors involved in signaling pathways. Nuclear receptors have been shown to regulate pathways involved in embryonic development, as well as in maintenance of proper cell function in adults. Members of this family are characterized by discrete domains that function in DNA and ligand binding. This gene encodes a retinal nuclear receptor that is a ligand-dependent transcription factor. Defects in this gene are a cause of enhanced S cone syndrome. Alternatively spliced transcript variants encoding different isoforms have been identified.

Note: This product is for in vitro research use only