

OAT antibody

Catalog No: #38766

Package Size: #38766-1 50ul #38766-2 100ul

Orders: order@signalwayantibody.comSupport: tech@signalwayantibody.com

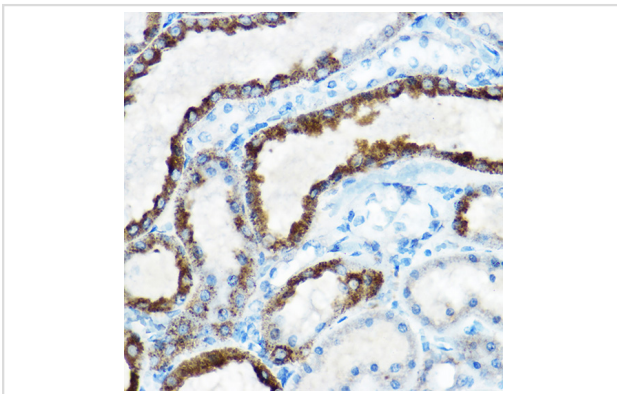
Description

Product Name	OAT antibody
Host Species	Rabbit
Clonality	Polyclonal
Isotype	IgG
Purification	Affinity purification
Applications	WB,IHC
Species Reactivity	Human,Mouse,Rat
Specificity	The antibody detects endogenous level of total OAT protein.
Immunogen Type	Recombinant Protein
Immunogen Description	Recombinant fusion protein of human OAT (NP_000265.1).
Target Name	OAT
Other Names	OAT;GACR;HOGA;OATASE;OKT
Accession No.	Uniprot:P04181GeneID:4942
Uniprot	P04181
GeneID	4942
SDS-PAGE MW	47kDa
Concentration	1.0mg/ml
Formulation	PBS with 0.02% sodium azide,50% glycerol,pH7.3.
Storage	Store at -20°C. Avoid freeze / thaw cycles.

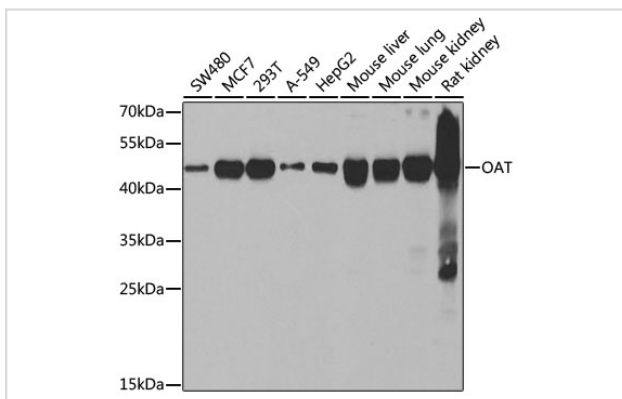
Application Details

WB □ 1:500 - 1:2000 IHC □ 1:50 - 1:200

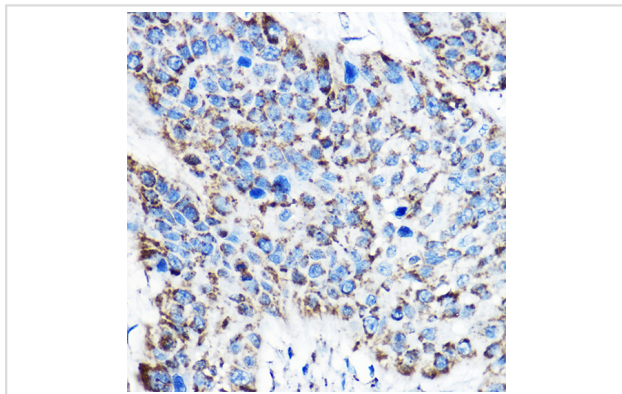
Images



Immunohistochemistry of paraffin-embedded rat kidney using OAT Rabbit pAb.



Western blot analysis of extracts of various cell lines, using OAT antibody.



Immunohistochemistry of paraffin-embedded human esophageal cancer using OAT Rabbit pAb.

Background

This gene encodes the mitochondrial enzyme ornithine aminotransferase, which is a key enzyme in the pathway that converts arginine and ornithine into the major excitatory and inhibitory neurotransmitters glutamate and GABA. Mutations that result in a deficiency of this enzyme cause the autosomal recessive eye disease Gyrate Atrophy. Alternatively spliced transcript variants encoding different isoforms have been described. Related pseudogenes have been defined on the X chromosome.

Note: This product is for in vitro research use only