

## AKT1S1 antibody

Catalog No: #38768

Package Size: #38768-1 50ul #38768-2 100ul

Orders: order@signalwayantibody.com

Support: tech@signalwayantibody.com

## Description

Product Name	AKT1S1 antibody
Host Species	Rabbit
Clonality	Polyclonal
Purification	Antibodies were purified by affinity purification using immunogen.
Applications	WB,IHC,IF
Species Reactivity	Human,Mouse,Rat
Specificity	The antibody detects endogenous level of total AKT1S1 protein.
Immunogen Type	Recombinant Protein
Immunogen Description	Recombinant protein of human AKT1S1.
Target Name	AKT1S1
Other Names	Lobe; PRAS40;
Accession No.	Swiss-Prot#: Q96B36NCBI Gene ID: 84335
Uniprot	Q96B36
GeneID	84335;
SDS-PAGE MW	27kd
Concentration	1.0mg/ml
Formulation	Supplied at 1.0mg/mL in phosphate buffered saline (without Mg <sup>2+</sup> and Ca <sup>2+</sup> ), pH 7.4, 150mM NaCl, 0.02% sodium azide and 50% glycerol.
Storage	Store at -20°C

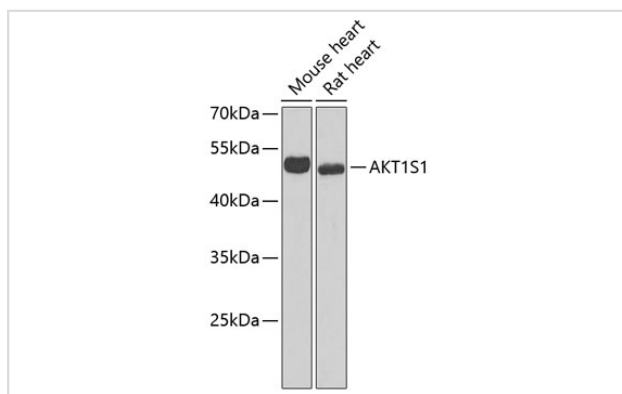
## Application Details

WB □ 1:500 - 1:2000

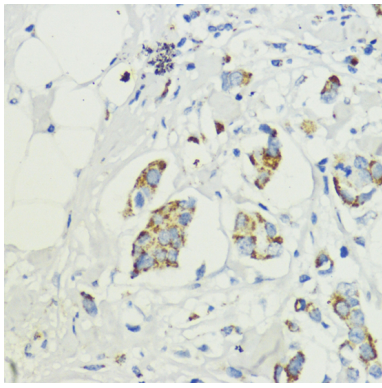
IHC □ 1:50 - 1:100

IF □ 1:50 - 1:100

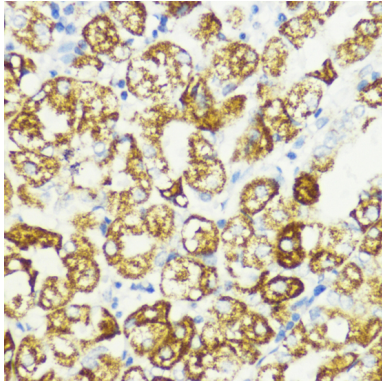
## Images



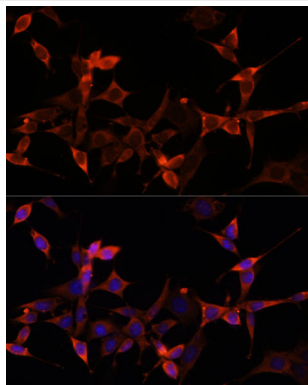
Western blot analysis of extracts of various cell lines, using AKT1S1 at 1:1000 dilution.



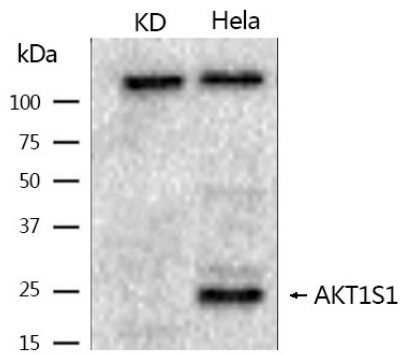
Immunohistochemistry of paraffin-embedded human mammary cancer using AKT1S1 at dilution of 1:200 (40x lens).



Immunohistochemistry of paraffin-embedded human stomach using AKT1S1 at dilution of 1:200 (40x lens).



Immunofluorescence analysis of NIH-3T3 cells using AKT1S1 Polyclonal at dilution of 1:100 (40x lens). Blue: DAPI for nuclear staining.



Western blotting analysis using AKT1S1 antibody #38768.

## Background

AKT1S1 is a proline-rich substrate of AKT (MIM 164730) that binds 14-3-3 protein (see YWHAH, MIM 113508) when phosphorylated (Kovacina et al., 2003)

Note: This product is for in vitro research use only