

PHLDA2 antibody

Catalog No: #38771

Package Size: #38771-1 50ul #38771-2 100ul

Orders: order@signalwayantibody.comSupport: tech@signalwayantibody.com

Description

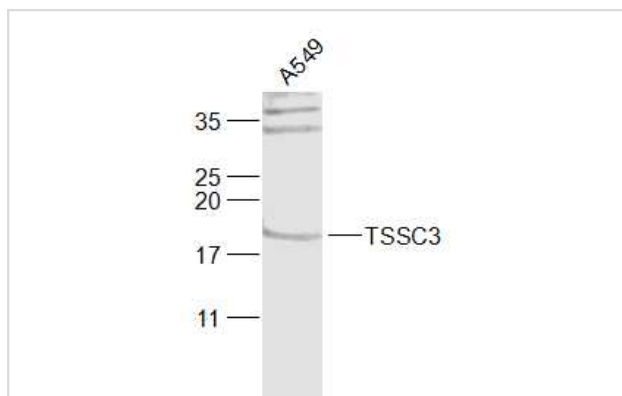
Product Name	PHLDA2 antibody
Host Species	Rabbit
Clonality	Polyclonal
Purification	Antibodies were purified by affinity purification using immunogen.
Applications	WB,IHC
Species Reactivity	Human,Rat
Specificity	The antibody detects endogenous level of total PHLDA2 protein.
Immunogen Type	Recombinant Protein
Immunogen Description	Recombinant protein of human PHLDA2.
Target Name	PHLDA2
Other Names	IPL; BRW1C; BWR1C; HLDA2; TSSC3;
Accession No.	Swiss-Prot#: Q53GA4NCBI Gene ID: 7262
Uniprot	Q53GA4
GeneID	7262;
SDS-PAGE MW	18 kD
Concentration	1.0mg/ml
Formulation	0.01M TBS(pH7.4) with 1% BSA, 0.03% Proclin300 and 50% Glycerol.
Storage	Store at -20°C

Application Details

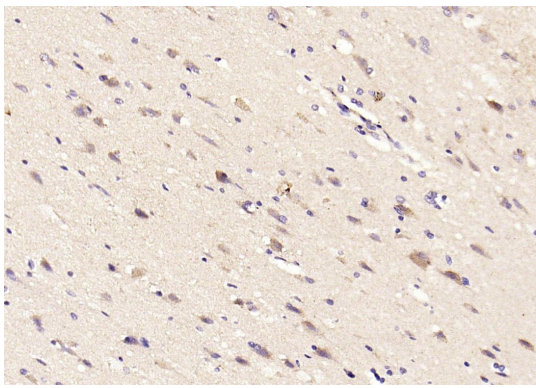
WB 1:500 - 1:2000

IHC 1:100 - 1:500

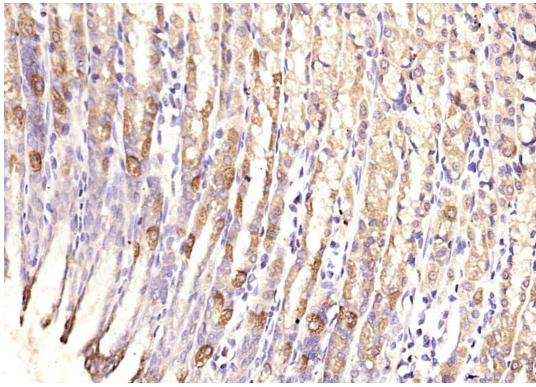
Images



Sample: A549 Cell Lysate at 30 ug;
 Primary: PHLDA2 antibody at 1/1000 dilution;
 Secondary: HRP Goat Anti-Rabbit IgG at 1/20000 dilution;
 Predicted band size: 17 kD;
 Observed band size: 18 kD.



Paraformaldehyde-fixed, paraffin embedded (human brain); Antigen retrieval by boiling in sodium citrate buffer (pH6.0) for 15min; Block endogenous peroxidase by 3% hydrogen peroxide for 20 minutes; Blocking buffer (normal goat serum) at 37°C for 30min; Antibody incubation with PHLDA2 antibody at 1:200 overnight at 4°C; Secondary antibody HRP Goat Anti-Rabbit IgG was diluted at 1:200(room temperature, 30min), followed by DAB staining.



Paraformaldehyde-fixed, paraffin embedded (rat stomach); Antigen retrieval by boiling in sodium citrate buffer (pH6.0) for 15min; Block endogenous peroxidase by 3% hydrogen peroxide for 20 minutes; Blocking buffer (normal goat serum) at 37°C for 30min; Antibody incubation with PHLDA2 antibody at 1:200 overnight at 4°C; Secondary antibody HRP Goat Anti-Rabbit IgG was diluted at 1:200(room temperature, 30min), followed by DAB staining.

Background

This gene is located in a cluster of imprinted genes on chromosome 11p15.5, which is considered to be an important tumor suppressor gene region. Alterations in this region may be associated with the Beckwith-Wiedemann syndrome, Wilms tumor, rhabdomyosarcoma, adrenocortical carcinoma, and lung, ovarian, and breast cancer. This gene has been shown to be imprinted, with preferential expression from the maternal allele in placenta and liver.

Note: This product is for in vitro research use only