

SERPINB1 antibody

Catalog No: #38783

Package Size: #38783-1 50ul #38783-2 100ul

Orders: order@signalwayantibody.comSupport: tech@signalwayantibody.com

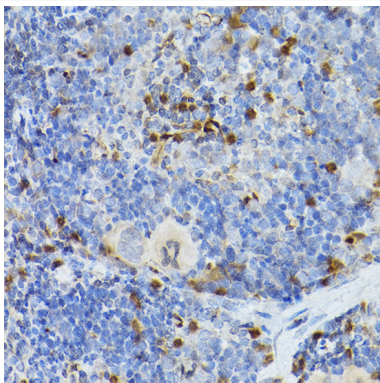
Description

Product Name	SERPINB1 antibody
Host Species	Rabbit
Clonality	Polyclonal
Isotype	IgG
Purification	Affinity purification
Applications	WB,IHC,IF
Species Reactivity	Human,Mouse,Rat
Specificity	The antibody detects endogenous level of total SERPINB1 protein.
Immunogen Type	Recombinant Protein
Immunogen Description	Recombinant fusion protein of human SERPINB1 (NP_109591.1).
Target Name	SERPINB1
Other Names	SERPINB1;EI;ELANH2;HEL-S-27;HEL57;LEI;M/NEI;MNEI;PI-2;PI2
Accession No.	Uniprot:P30740GeneID:1992
Uniprot	P30740
GeneID	1992
SDS-PAGE MW	45KDa
Concentration	1.0mg/ml
Formulation	PBS with 0.02% sodium azide,50% glycerol,pH7.3.
Storage	Store at -20°C. Avoid freeze / thaw cycles.

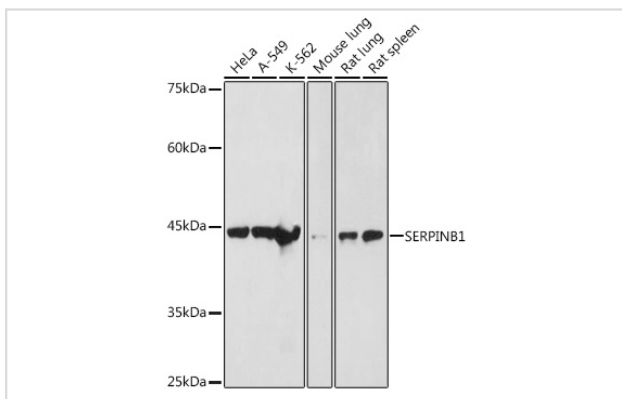
Application Details

WB □ 1:500 - 1:2000 IHC □ 1:50 - 1:200 IF □ 1:20 - 1:100

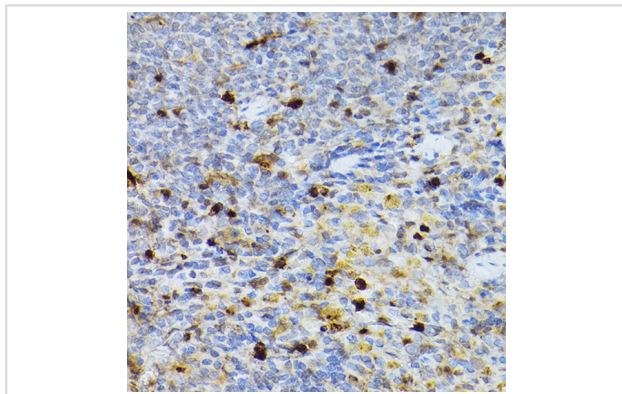
Images



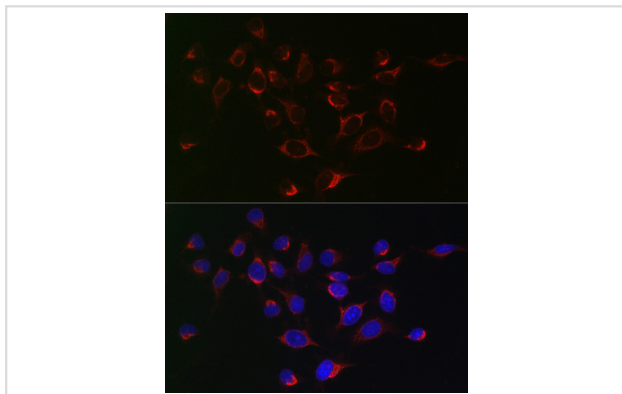
Immunohistochemistry of paraffin-embedded mouse spleen using SERPINB1 Rabbit pAb.



Western blot analysis of extracts of various cell lines, using SERPINB1 antibody.



Immunohistochemistry of paraffin-embedded rat spleen using SERPINB1 Rabbit pAb.



Immunofluorescence analysis of HeLa cells using SERPINB1 Rabbit pAb.

Background

The protein encoded by this gene is a member of the serpin family of proteinase inhibitors. Members of this family maintain homeostasis by neutralizing overexpressed proteinase activity through their function as suicide substrates. This protein inhibits the neutrophil-derived proteinases neutrophil elastase, cathepsin G, and proteinase-3 and thus protects tissues from damage at inflammatory sites. Alternative splicing results in multiple transcript variants.

Note: This product is for in vitro research use only