

ADPRH antibody

Catalog No: #38787

Package Size: #38787-1 50ul #38787-2 100ul

Orders: order@signalwayantibody.com

Support: tech@signalwayantibody.com

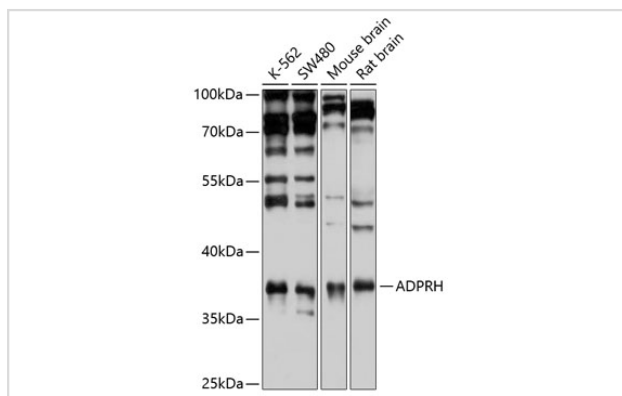
Description

Product Name	ADPRH antibody
Host Species	Rabbit
Clonality	Polyclonal
Purification	Antibodies were purified by affinity purification using immunogen.
Applications	WB
Species Reactivity	Human,Mouse,Rat
Specificity	The antibody detects endogenous level of total ADPRH protein.
Immunogen Type	Recombinant Protein
Immunogen Description	Recombinant protein of human ADPRH.
Target Name	ADPRH
Other Names	ARH1;
Accession No.	Swiss-Prot#: P54922NCBI Gene ID: 141
Uniprot	P54922
GeneID	141;
SDS-PAGE MW	39kd
Concentration	1.0mg/ml
Formulation	Supplied at 1.0mg/mL in phosphate buffered saline (without Mg ²⁺ and Ca ²⁺), pH 7.4, 150mM NaCl, 0.02% sodium azide and 50% glycerol.
Storage	Store at -20°C

Application Details

WB □ 1:500 - 1:2000

Images



Western blot analysis of extracts of various cell lines, using ADPRH at 1:1000 dilution.

Background

The enzyme encoded by this gene catalyzes removal of mono-ADP-ribose from arginine residues of proteins in the ADP-ribosylation cycle. Unlike the rat and mouse enzymes that require DTT for maximal activity, the human enzyme is DTT-independent. Alternatively spliced transcript variants that encode different protein isoforms have been described.

Note: This product is for in vitro research use only