

## BNIP3L antibody

Catalog No: #38792

Package Size: #38792-1 50ul #38792-2 100ul

Orders: [order@signalwayantibody.com](mailto:order@signalwayantibody.com)Support: [tech@signalwayantibody.com](mailto:tech@signalwayantibody.com)

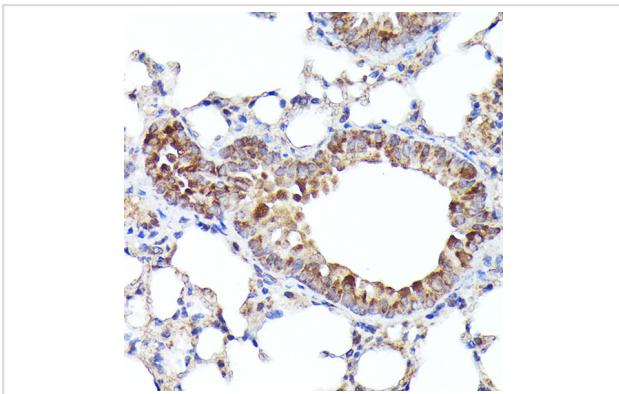
## Description

Product Name	BNIP3L antibody
Host Species	Rabbit
Clonality	Polyclonal
Isotype	IgG
Purification	Affinity purification
Applications	WB,IHC,IF
Species Reactivity	Human,Mouse,Rat
Specificity	The antibody detects endogenous level of total BNIP3L protein.
Immunogen Type	Recombinant Protein
Immunogen Description	Recombinant fusion protein of human BNIP3L (NP_004322.1).
Target Name	BNIP3L
Other Names	BNIP3L;BNIP3a;NIX
Accession No.	Uniprot:O60238GeneID:665
Uniprot	O60238
GeneID	665
SDS-PAGE MW	45KDa/70KDa
Concentration	1.0mg/ml
Formulation	PBS with 0.02% sodium azide,50% glycerol,pH7.3.
Storage	Store at -20°C. Avoid freeze / thaw cycles.

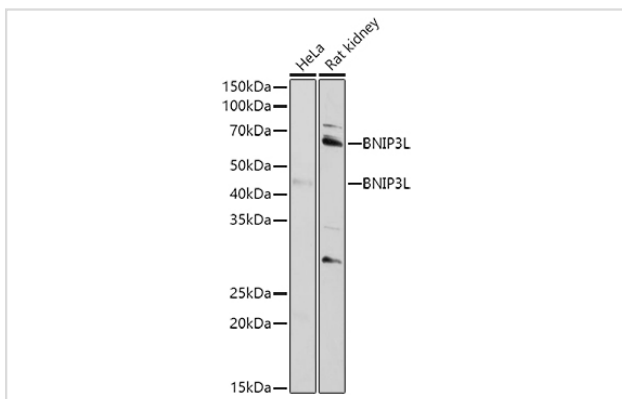
## Application Details

WB 1:500 - 1:2000 IHC 1:50 - 1:200 IF 1:50 - 1:200

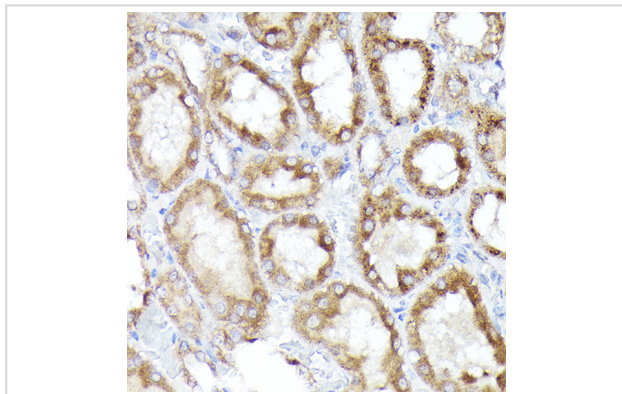
## Images



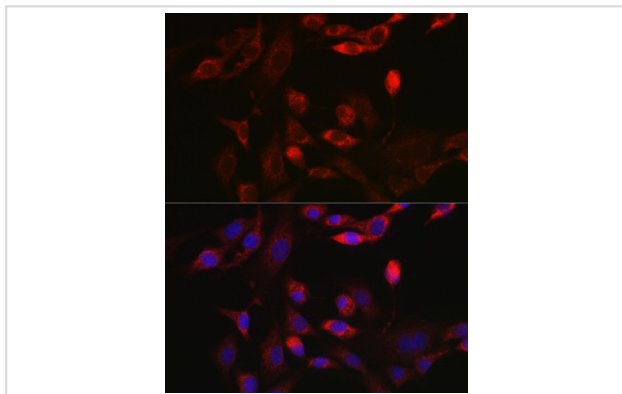
Immunohistochemistry of paraffin-embedded mouse lung using BNIP3L Rabbit pAb.



Western blot analysis of extracts of various cell lines, using BNIP3L antibody.



Immunohistochemistry of paraffin-embedded rat kidney using BNIP3L Rabbit pAb.



Immunofluorescence analysis of NIH/3T3 cells using BNIP3L Rabbit pAb.

## Background

This gene encodes a protein that belongs to the pro-apoptotic subfamily within the Bcl-2 family of proteins. The encoded protein binds to Bcl-2 and possesses the BH3 domain. The protein directly targets mitochondria and causes apoptotic changes, including loss of membrane potential and the release of cytochrome c.

Note: This product is for in vitro research use only