

## GALT antibody

Catalog No: #38799

Package Size: #38799-1 50ul #38799-2 100ul

Orders: order@signalwayantibody.com

Support: tech@signalwayantibody.com

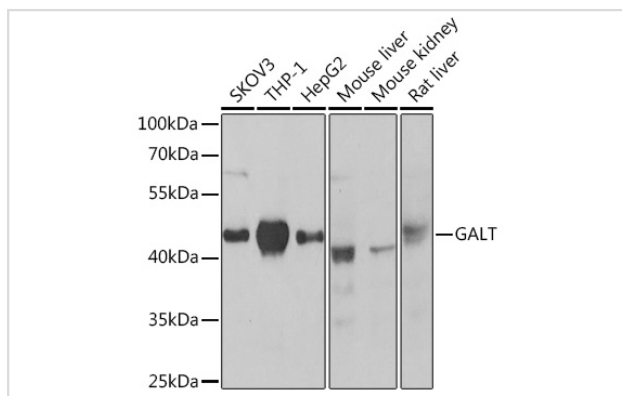
## Description

Product Name	GALT antibody
Host Species	Rabbit
Clonality	Polyclonal
Isotype	IgG
Purification	Affinity purification
Applications	WB
Species Reactivity	Human,Mouse,Rat
Specificity	The antibody detects endogenous level of total GALT protein.
Immunogen Type	Recombinant Protein
Immunogen Description	Recombinant fusion protein of human GALT (NP_000146.2).
Target Name	GALT
Other Names	GALT
Accession No.	Uniprot:P07902GeneID:2592
Uniprot	P07902
GeneID	2592
SDS-PAGE MW	43kDa
Concentration	1.0mg/ml
Formulation	PBS with 0.02% sodium azide,50% glycerol,pH7.3.
Storage	Store at -20°C. Avoid freeze / thaw cycles.

## Application Details

WB □ 1:500 - 1:2000

## Images



Western blot analysis of extracts of various cell lines, using GALT Rabbit pAb.

## Background

---

Galactose-1-phosphate uridyl transferase (GALT) catalyzes the second step of the Leloir pathway of galactose metabolism, namely the conversion of UDP-glucose + galactose-1-phosphate to glucose-1-phosphate + UDP-galactose. The absence of this enzyme results in classic galactosemia in humans and can be fatal in the newborn period if lactose is not removed from the diet. The pathophysiology of galactosemia has not been clearly defined. Two transcript variants encoding different isoforms have been found for this gene.

---

Note: This product is for in vitro research use only