

AGFG1 antibody

Catalog No: #38801

Package Size: #38801-1 50ul #38801-2 100ul

Orders: order@signalwayantibody.com

Support: tech@signalwayantibody.com

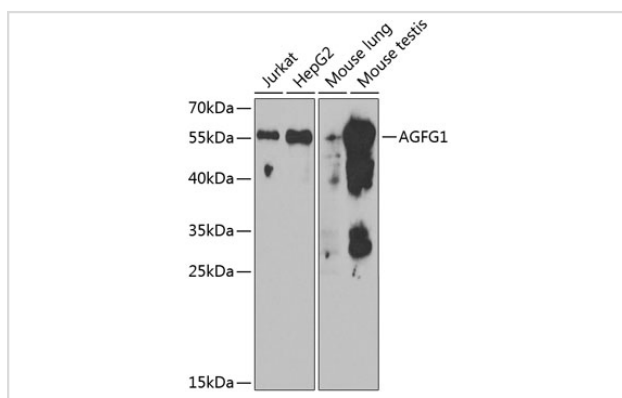
Description

| | |
|-----------------------|--|
| Product Name | AGFG1 antibody |
| Host Species | Rabbit |
| Clonality | Polyclonal |
| Purification | Antibodies were purified by affinity purification using immunogen. |
| Applications | WB |
| Species Reactivity | Human,Mouse |
| Specificity | The antibody detects endogenous level of total AGFG1 protein. |
| Immunogen Type | Recombinant Protein |
| Immunogen Description | Recombinant protein of human AGFG1. |
| Target Name | AGFG1 |
| Other Names | HRB; RAB; RIP; |
| Accession No. | Swiss-Prot#: P52594NCBI Gene ID: 3267 |
| Uniprot | P52594 |
| GeneID | 3267; |
| SDS-PAGE MW | 58kd |
| Concentration | 1.0mg/ml |
| Formulation | Supplied at 1.0mg/mL in phosphate buffered saline (without Mg ²⁺ and Ca ²⁺), pH 7.4, 150mM NaCl, 0.02% sodium azide and 50% glycerol. |
| Storage | Store at -20°C |

Application Details

WB □ 1:500 - 1:2000

Images



Western blot analysis of extracts of various cell lines, using AGFG1 at 1:1000 dilution.

Background

The protein encoded by this gene is related to nucleoporins, a class of proteins that mediate nucleocytoplasmic transport. The encoded protein binds the activation domain of the human immunodeficiency virus Rev protein when Rev is assembled onto its RNA target, and is required for the nuclear export of Rev-directed RNAs. Multiple transcript variants encoding different isoforms have been found for this gene.

Note: This product is for in vitro research use only