

NEU1 antibody

Catalog No: #38805

Package Size: #38805-1 50ul #38805-2 100ul

Orders: order@signalwayantibody.comSupport: tech@signalwayantibody.com

Description

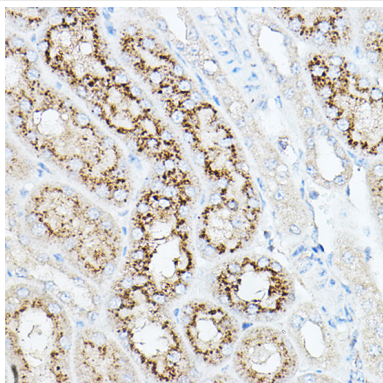
Product Name	NEU1 antibody
Host Species	Rabbit
Clonality	Polyclonal
Isotype	IgG
Purification	Affinity purification
Applications	WB,IHC
Species Reactivity	Human,Mouse,Rat
Specificity	The antibody detects endogenous level of total NEU1 protein.
Immunogen Type	Recombinant Protein
Immunogen Description	Recombinant fusion protein of human NEU1 (NP_000425.1).
Target Name	NEU1
Other Names	NEU1;NANH;NEU;SIAL1
Accession No.	Uniprot:Q99519GeneID:4758
Uniprot	Q99519
GeneID	4758
SDS-PAGE MW	45KDa
Concentration	1.2mg/mL
Formulation	PBS with 0.02% sodium azide,50% glycerol,pH7.3.
Storage	Store at -20°C. Avoid freeze / thaw cycles.

Application Details

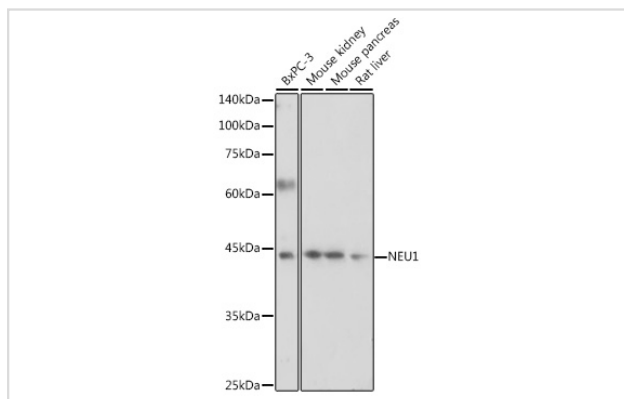
WB 1:500 - 1:1000

IHC 1:50 - 1:200

Images



Immunohistochemistry of paraffin-embedded mouse kidney using NEU1 Rabbit pAb.



Western blot analysis of extracts of various cell lines, using NEU1 antibody.

Background

The protein encoded by this gene is a lysosomal enzyme that cleaves terminal sialic acid residues from substrates such as glycoproteins and glycolipids. In the lysosome, this enzyme is part of a heterotrimeric complex together with beta-galactosidase and cathepsin A (the latter is also referred to as 'protective protein'). Mutations in this gene can lead to sialidosis, a lysosomal storage disease that can be type 1 (cherry red spot-myoclonus syndrome or normosomatic type), which is late-onset, or type 2 (the dysmorphic type), which occurs at an earlier age with increased severity.

Note: This product is for in vitro research use only