

## OXA1L antibody

Catalog No: #38806

Package Size: #38806-1 50ul #38806-2 100ul

Orders: order@signalwayantibody.com

Support: tech@signalwayantibody.com

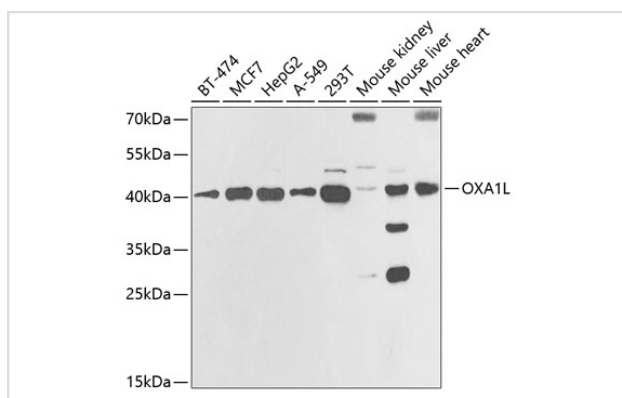
## Description

Product Name	OXA1L antibody
Host Species	Rabbit
Clonality	Polyclonal
Isotype	IgG
Purification	Affinity purification
Applications	WB
Species Reactivity	Human,Mouse,Rat
Specificity	The antibody detects endogenous level of total OXA1L protein.
Immunogen Type	Recombinant Protein
Immunogen Description	Recombinant fusion protein of human OXA1L (NP_005006.3).
Target Name	OXA1L
Other Names	OXA1L;OXA1
Accession No.	Uniprot:Q15070GeneID:5018
Uniprot	Q15070
GeneID	5018
SDS-PAGE MW	42kDa
Concentration	1.0mg/ml
Formulation	PBS with 0.02% sodium azide,50% glycerol,pH7.3.
Storage	Store at -20°C. Avoid freeze / thaw cycles.

## Application Details

WB □ 1:500 - 1:2000

## Images



Western blot analysis of extracts of various cell lines, using OXA1L antibody.

## Background

---

This gene encodes an evolutionarily conserved protein that is localized to the inner mitochondrial membrane. The encoded protein is essential for the translocation of the N-terminal tail of subunit 2 of cytochrome c oxidase, and is involved in the assembly of the cytochrome c oxidase and ATPase complexes of the mitochondrial respiratory chain.

---

Note: This product is for in vitro research use only