

PC antibody

Catalog No: #38807

Package Size: #38807-1 50ul #38807-2 100ul

Orders: order@signalwayantibody.com

Support: tech@signalwayantibody.com

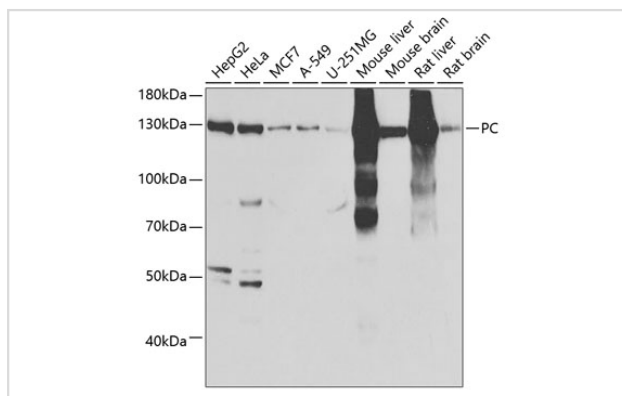
Description

| | |
|-----------------------|--|
| Product Name | PC antibody |
| Host Species | Rabbit |
| Clonality | Polyclonal |
| Purification | Antibodies were purified by affinity purification using immunogen. |
| Applications | WB,IF |
| Species Reactivity | Human,Mouse,Rat |
| Specificity | The antibody detects endogenous level of total PC protein. |
| Immunogen Type | Recombinant Protein |
| Immunogen Description | Recombinant protein of human PC. |
| Target Name | PC |
| Other Names | PCB; |
| Accession No. | Swiss-Prot#: P11498NCBI Gene ID: 5091 |
| Uniprot | P11498 |
| GeneID | 5091; |
| SDS-PAGE MW | 129kd |
| Concentration | 1.0mg/ml |
| Formulation | Supplied at 1.0mg/mL in phosphate buffered saline (without Mg ²⁺ and Ca ²⁺), pH 7.4, 150mM NaCl, 0.02% sodium azide and 50% glycerol. |
| Storage | Store at -20°C |

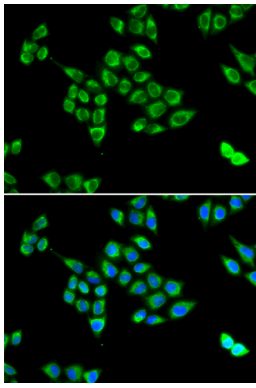
Application Details

WB □ 1:500 - 1:2000IF □ 1:10 - 1:100

Images



Western blot analysis of extracts of various cell lines, using PC at 1:1000 dilution.



Immunofluorescence analysis of U2OS cells using PC . Blue: DAPI for nuclear staining.

Background

This gene encodes pyruvate carboxylase, which requires biotin and ATP to catalyse the carboxylation of pyruvate to oxaloacetate. The active enzyme is a homotetramer arranged in a tetrahedron which is located exclusively in the mitochondrial matrix. Pyruvate carboxylase is involved in gluconeogenesis, lipogenesis, insulin secretion and synthesis of the neurotransmitter glutamate. Mutations in this gene have been associated with pyruvate carboxylase deficiency. Alternatively spliced transcript variants with different 5' UTRs, but encoding the same protein, have been found for this gene.

Note: This product is for in vitro research use only