

PGM1 antibody

Catalog No: #38809

Package Size: #38809-1 50ul #38809-2 100ul

Orders: order@signalwayantibody.com

Support: tech@signalwayantibody.com

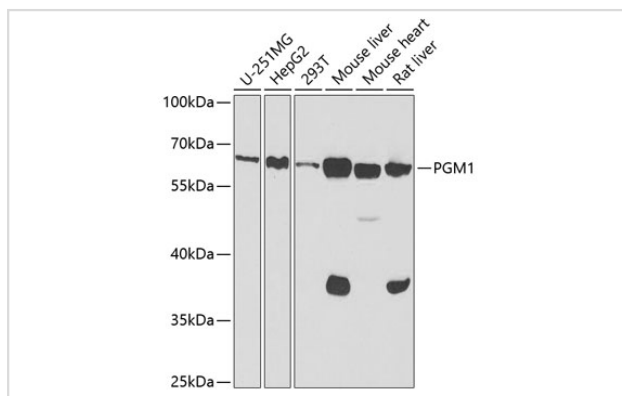
Description

Product Name	PGM1 antibody
Host Species	Rabbit
Clonality	Polyclonal
Isotype	IgG
Purification	Affinity purification
Applications	WB
Species Reactivity	Human,Mouse,Rat
Specificity	The antibody detects endogenous level of total PGM1 protein.
Immunogen Type	Recombinant Protein
Immunogen Description	Recombinant fusion protein of human PGM1 (NP_002624.2).
Target Name	PGM1
Other Names	PGM1;CDG1T;GSD14
Accession No.	Uniprot:P36871GenelD:5236
Uniprot	P36871
GenelD	5236
SDS-PAGE MW	61kDa
Concentration	1.0mg/ml
Formulation	PBS with 0.02% sodium azide,50% glycerol,pH7.3.
Storage	Store at -20°C. Avoid freeze / thaw cycles.

Application Details

WB □ 1:500 - 1:2000

Images



Western blot analysis of extracts of various cell lines, using PGM1 antibody.

Background

The protein encoded by this gene is an isozyme of phosphoglucomutase (PGM) and belongs to the phosphohexose mutase family. There are several PGM isozymes, which are encoded by different genes and catalyze the transfer of phosphate between the 1 and 6 positions of glucose. In most cell types, this PGM isozyme is predominant, representing about 90% of total PGM activity. In red cells, PGM2 is a major isozyme. This gene is highly polymorphic. Mutations in this gene cause glycogen storage disease type 14. Alternatively spliced transcript variants encoding different isoforms have been identified in this gene.

Note: This product is for in vitro research use only