

CANT1 antibody

Catalog No: #38838

Package Size: #38838-1 50ul #38838-2 100ul

Orders: order@signalwayantibody.com

Support: tech@signalwayantibody.com

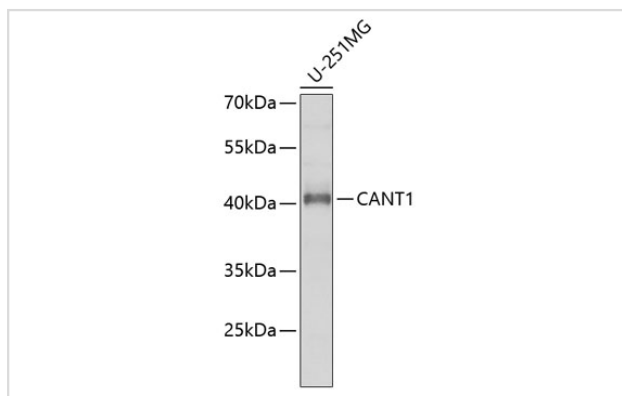
Description

Product Name	CANT1 antibody
Host Species	Rabbit
Clonality	Polyclonal
Purification	Antibodies were purified by affinity purification using immunogen.
Applications	WB,IF
Species Reactivity	Human
Specificity	The antibody detects endogenous level of total CANT1 protein.
Immunogen Type	Recombinant Protein
Immunogen Description	Recombinant protein of human CANT1.
Target Name	CANT1
Other Names	DBQD; SCAN1; SHAPY; SCAN-1;
Accession No.	Swiss-Prot#: Q8WVQ1NCBI Gene ID: 124583
Uniprot	Q8WVQ1
GeneID	124583;
SDS-PAGE MW	45kd
Concentration	1.0mg/ml
Formulation	Supplied at 1.0mg/mL in phosphate buffered saline (without Mg ²⁺ and Ca ²⁺), pH 7.4, 150mM NaCl, 0.02% sodium azide and 50% glycerol.
Storage	Store at -20°C

Application Details

WB □ 1:500 - 1:2000IF □ 1:50 - 1:100

Images



Western blot analysis of extracts of U-251MG cells, using CANT1 at 1:1000 dilution.

Background

This protein encoded by this gene belongs to the apyrase family. It functions as a calcium-dependent nucleotidase with a preference for UDP. Mutations in this gene are associated with Desbuquois dysplasia with hand anomalies. Alternatively spliced transcript variants have been noted for this gene.

Note: This product is for in vitro research use only