

ASL antibody

Catalog No: #38844

Package Size: #38844-1 50ul #38844-2 100ul

Orders: order@signalwayantibody.com

Support: tech@signalwayantibody.com

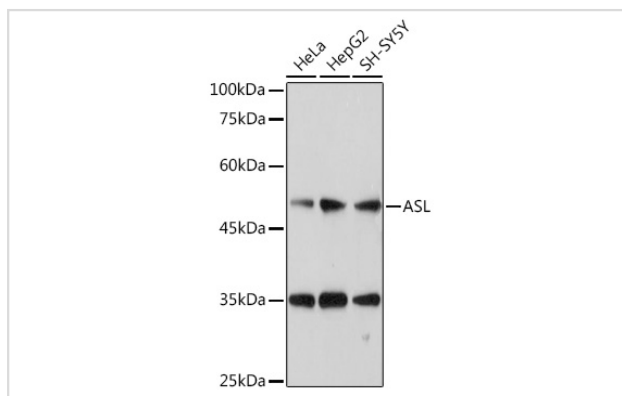
Description

Product Name	ASL antibody
Host Species	Rabbit
Clonality	Polyclonal
Isotype	IgG
Purification	Affinity purification
Applications	WB,IHC,IF
Species Reactivity	Human,Mouse,Rat
Specificity	The antibody detects endogenous level of total ASL protein.
Immunogen Type	Recombinant Protein
Immunogen Description	Recombinant fusion protein of human ASL (NP_000039.2).
Target Name	ASL
Other Names	ASL;ASAL
Accession No.	Uniprot:P04424GeneID:435
Uniprot	P04424
GeneID	435
SDS-PAGE MW	49KDa
Concentration	1.0mg/ml
Formulation	PBS with 0.02% sodium azide,50% glycerol,pH7.3.
Storage	Store at -20°C. Avoid freeze / thaw cycles.

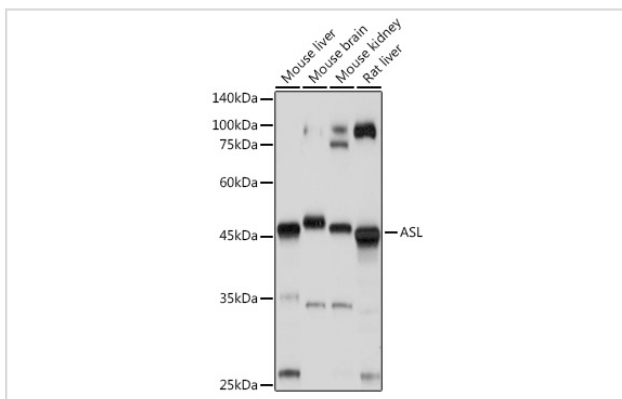
Application Details

WB 1:500 - 1:2000 IHC 1:50 - 1:200 IF 1:50 - 1:100

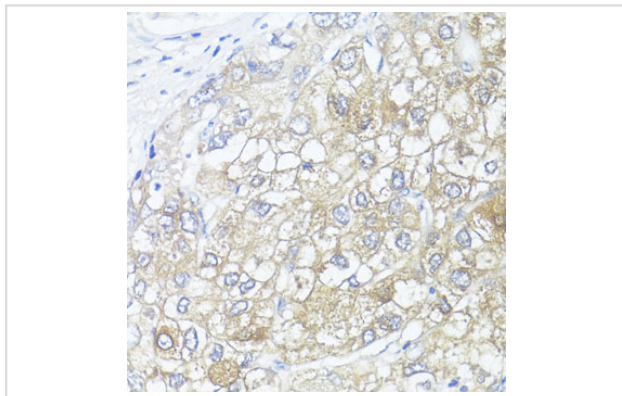
Images



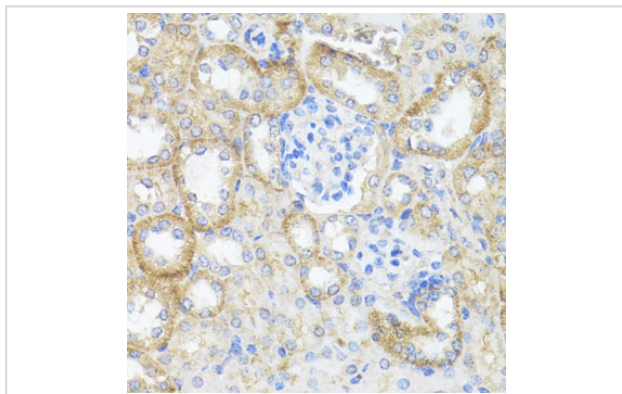
Western blot analysis of extracts of various cell lines, using ASL antibody.



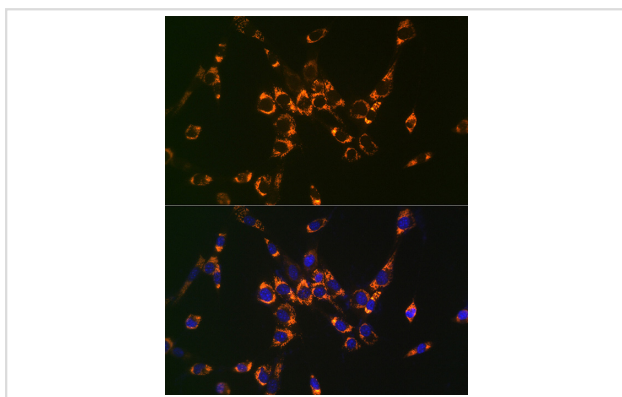
Western blot analysis of extracts of various cell lines, using ASL antibody.



Immunohistochemistry of paraffin-embedded human liver cancer using ASL antibody.



Immunohistochemistry of paraffin-embedded mouse kidney using ASL antibody.



Immunofluorescence analysis of NIH-3T3 cells using ASL Rabbit pAb.

Background

This gene encodes a member of the lyase 1 family. The encoded protein forms a cytosolic homotetramer and primarily catalyzes the reversible hydrolytic cleavage of argininosuccinate into arginine and fumarate, an essential step in the liver in detoxifying ammonia via the urea cycle. Mutations in this gene result in the autosomal recessive disorder argininosuccinic aciduria, or argininosuccinic acid lyase deficiency. A nontranscribed pseudogene is also located on the long arm of chromosome 22. Alternatively spliced transcript variants encoding different isoforms have been described.

Note: This product is for in vitro research use only