

## BTG1 antibody

Catalog No: #38845

Package Size: #38845-1 50ul #38845-2 100ul

Orders: order@signalwayantibody.com

Support: tech@signalwayantibody.com

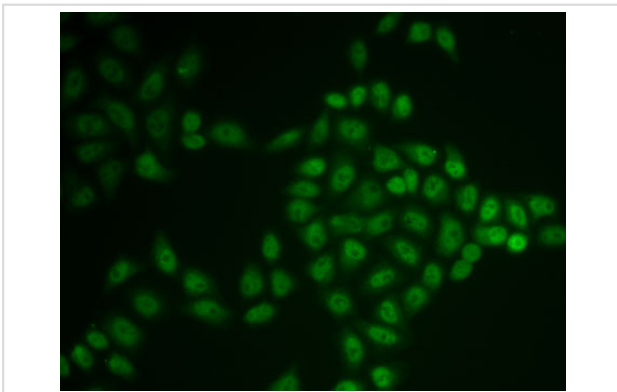
## Description

Product Name	BTG1 antibody
Host Species	Rabbit
Clonality	Polyclonal
Purification	Antibodies were purified by affinity purification using immunogen.
Applications	WB,IF
Species Reactivity	Human
Specificity	The antibody detects endogenous level of total BTG1 protein.
Immunogen Type	Recombinant Protein
Immunogen Description	Recombinant protein of human BTG1.
Target Name	BTG1
Accession No.	Swiss-Prot#: P62324NCBI Gene ID: 694
Uniprot	P62324
GeneID	694;
SDS-PAGE MW	19kd
Concentration	1.0mg/ml
Formulation	Supplied at 1.0mg/mL in phosphate buffered saline (without Mg <sup>2+</sup> and Ca <sup>2+</sup> ), pH 7.4, 150mM NaCl, 0.02% sodium azide and 50% glycerol.
Storage	Store at -20°C

## Application Details

WB □ 1:500 - 1:2000IF □ 1:50 - 1:100

## Images



Immunofluorescence analysis of U2OS cells using BTG1 .

## Background

This gene is a member of an anti-proliferative gene family that regulates cell growth and differentiation. Expression of this gene is highest in the G0/G1

phases of the cell cycle and downregulated when cells progressed through G1. The encoded protein interacts with several nuclear receptors, and functions as a coactivator of cell differentiation. This locus has been shown to be involved in a t(8;12)(q24;q22) chromosomal translocation in a case of B-cell chronic lymphocytic leukemia.

---

Note: This product is for in vitro research use only