

## SLC26A2 antibody

Catalog No: #38854

Package Size: #38854-1 50ul #38854-2 100ul

Orders: order@signalwayantibody.com

Support: tech@signalwayantibody.com

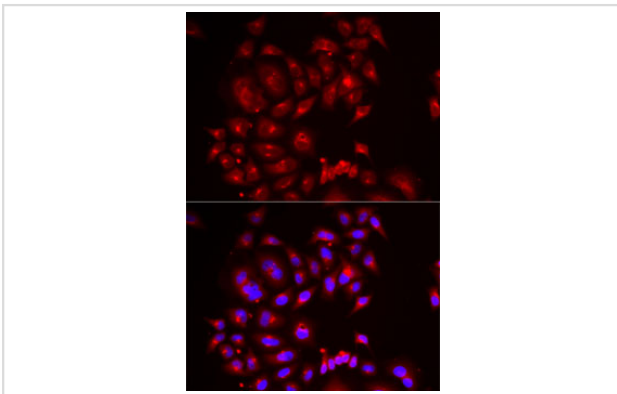
## Description

Product Name	SLC26A2 antibody
Host Species	Rabbit
Clonality	Polyclonal
Purification	Antibodies were purified by affinity purification using immunogen.
Applications	IF
Species Reactivity	Human
Specificity	The antibody detects endogenous level of total SLC26A2 protein.
Immunogen Type	Recombinant Protein
Immunogen Description	Recombinant protein of human SLC26A2.
Target Name	SLC26A2
Other Names	DTD; EDM4; DTDST; MST153; D5S1708; MSTP157;
Accession No.	Swiss-Prot#: P50443NCBI Gene ID: 1836
Uniprot	P50443
GeneID	1836;
SDS-PAGE MW	81kd
Concentration	1.0mg/ml
Formulation	Supplied at 1.0mg/mL in phosphate buffered saline (without Mg <sup>2+</sup> and Ca <sup>2+</sup> ), pH 7.4, 150mM NaCl, 0.02% sodium azide and 50% glycerol.
Storage	Store at -20°C

## Application Details

IF 1:50 - 1:100

## Images



Immunofluorescence analysis of MCF7 cells using SLC26A2 .  
Blue: DAPI for nuclear staining.

## Background

---

The diastrophic dysplasia sulfate transporter is a transmembrane glycoprotein implicated in the pathogenesis of several human chondrodysplasias. It apparently is critical in cartilage for sulfation of proteoglycans and matrix organization.

---

Note: This product is for in vitro research use only