

ELF3 antibody

Catalog No: #38856

Package Size: #38856-1 50ul #38856-2 100ul

Orders: order@signalwayantibody.com

Support: tech@signalwayantibody.com

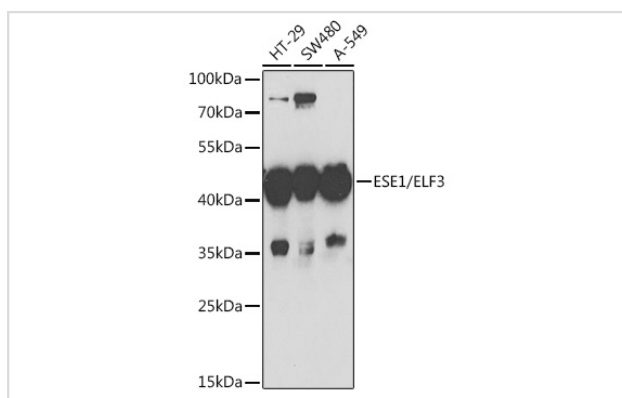
Description

Product Name	ELF3 antibody
Host Species	Rabbit
Clonality	Polyclonal
Isotype	IgG
Purification	Affinity purification
Applications	WB,IHC
Species Reactivity	Human,Mouse,Rat
Specificity	The antibody detects endogenous level of total ELF3 protein.
Immunogen Type	Recombinant Protein
Immunogen Description	Recombinant fusion protein of human ESE1/ESE1/ELF3 (NP_004424.3).
Target Name	ELF3
Other Names	ELF3;EPR-1;ERT;ESE-1;ESX
Accession No.	Uniprot:P78545GenelD:1999
Uniprot	P78545
GenelD	1999
SDS-PAGE MW	42kDa
Concentration	1.0mg/ml
Formulation	PBS with 0.02% sodium azide,50% glycerol,pH7.3.
Storage	Store at -20°C. Avoid freeze / thaw cycles.

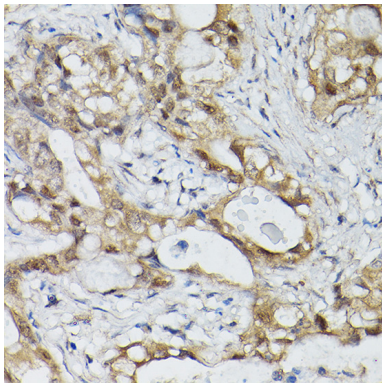
Application Details

WB □ 1:500 - 1:2000 IHC □ 1:50 - 1:200

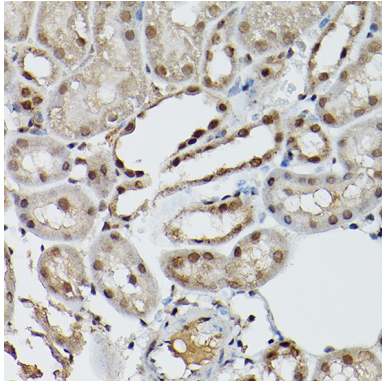
Images



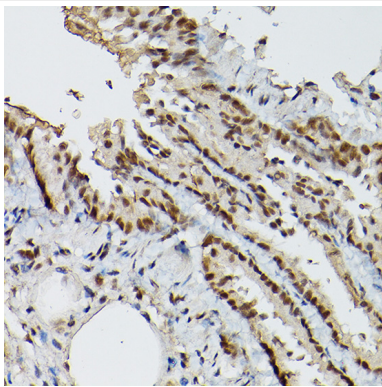
Western blot analysis of extracts of various cell lines, using ESE1/ESE1/ELF3 antibody.



Immunohistochemistry of paraffin-embedded human lung cancer using ESE1/ELF3 Rabbit pAb.



Immunohistochemistry of paraffin-embedded mouse kidney using ESE1/ELF3 Rabbit pAb.



Immunohistochemistry of paraffin-embedded rat lung using ESE1/ELF3 Rabbit pAb.

Background

Transcriptional activator that binds and transactivates ETS sequences containing the consensus nucleotide core sequence GGA[AT]. Acts synergistically with POU2F3 to transactivate the SPRR2A promoter and with RUNX1 to transactivate the ANGPT1 promoter. Also transactivates collagenase, CCL20, CLND7, FLG, KRT8, NOS2, PTGS2, SPRR2B, TGFBR2 and TGM3 promoters. Represses KRT4 promoter activity. Involved in mediating vascular inflammation. May play an important role in epithelial cell differentiation and tumorigenesis. May be a critical downstream effector of the ERBB2 signaling pathway. May be associated with mammary gland development and involution. Plays an important role in the regulation of transcription with TATA-less promoters in preimplantation embryos, which is essential in preimplantation development (By similarity).

Note: This product is for in vitro research use only