

## FABP5 antibody

Catalog No: #38858

Package Size: #38858-1 50ul #38858-2 100ul

Orders: [order@signalwayantibody.com](mailto:order@signalwayantibody.com)Support: [tech@signalwayantibody.com](mailto:tech@signalwayantibody.com)

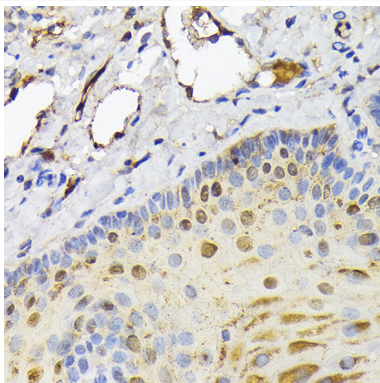
## Description

Product Name	FABP5 antibody
Host Species	Rabbit
Clonality	Polyclonal
Isotype	IgG
Purification	Affinity purification
Applications	WB,IHC,IF
Species Reactivity	Human,Mouse,Rat
Specificity	The antibody detects endogenous level of total FABP5 protein.
Immunogen Type	Recombinant Protein
Immunogen Description	Recombinant fusion protein of human FABP5 (NP_001435.1).
Target Name	FABP5
Other Names	FABP5;E-FABP;EFABP;KFABP;PA-FABP;PAFABP
Accession No.	Uniprot:Q01469GeneID:2171
Uniprot	Q01469
GeneID	2171
SDS-PAGE MW	15KDa
Concentration	1.0mg/ml
Formulation	PBS with 0.02% sodium azide,50% glycerol,pH7.3.
Storage	Store at -20°C. Avoid freeze / thaw cycles.

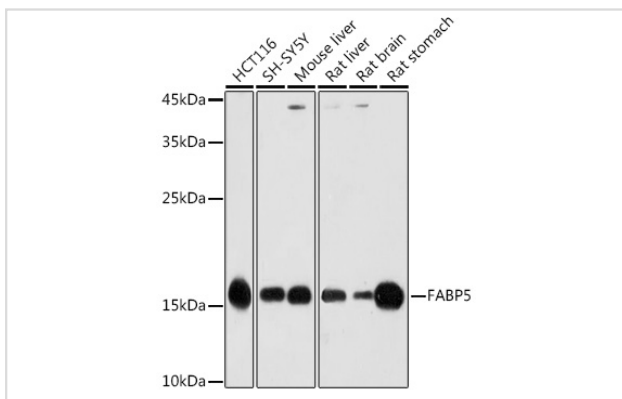
## Application Details

WB 1:500 - 1:2000 IHC 1:50 - 1:200 IF 1:50 - 1:200

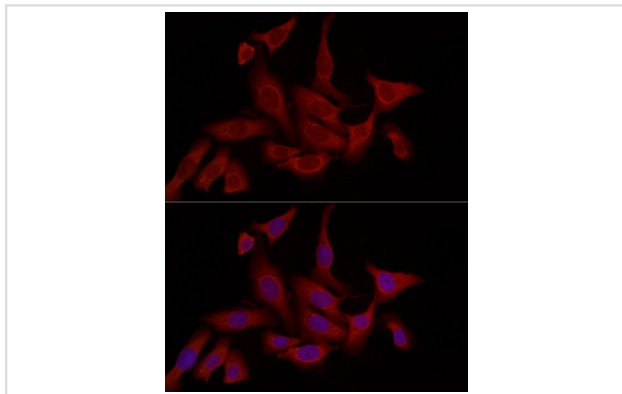
## Images



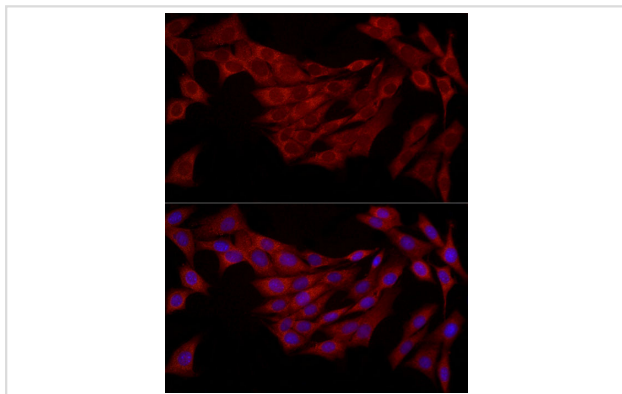
Immunohistochemistry of paraffin-embedded human esophageal cancer using FABP5 Rabbit pAb.



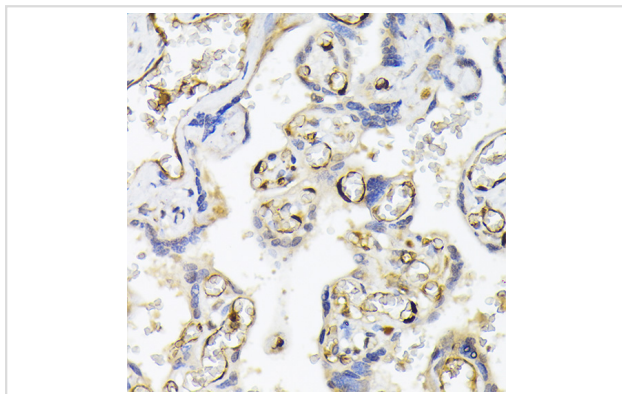
Western blot analysis of extracts of various cell lines, using FABP5 antibody.



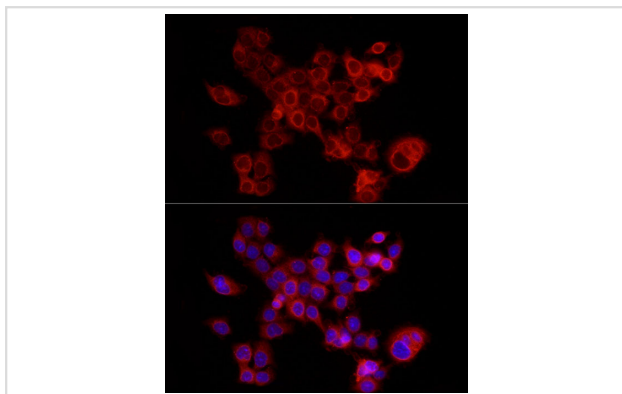
Immunofluorescence analysis of U2OS cells using FABP5 Rabbit pAb.



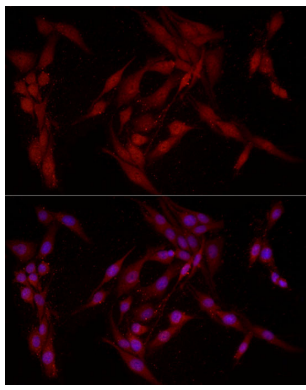
Immunofluorescence analysis of NIH/3T3 cells using FABP5 Rabbit pAb.



Immunohistochemistry of paraffin-embedded human placenta using FABP5 Rabbit pAb.



Immunofluorescence analysis of HCT116 cells using FABP5 Rabbit pAb.



Immunofluorescence analysis of PC-12 cells using FABP5 Rabbit pAb.

## Background

This gene encodes the fatty acid binding protein found in epidermal cells, and was first identified as being upregulated in psoriasis tissue. Fatty acid binding proteins are a family of small, highly conserved, cytoplasmic proteins that bind long-chain fatty acids and other hydrophobic ligands. FABPs may play roles in fatty acid uptake, transport, and metabolism. Polymorphisms in this gene are associated with type 2 diabetes. The human genome contains many pseudogenes similar to this locus.

Note: This product is for in vitro research use only