

ISL1 antibody

Catalog No: #38866

Package Size: #38866-1 50ul #38866-2 100ul

Orders: order@signalwayantibody.com

Support: tech@signalwayantibody.com

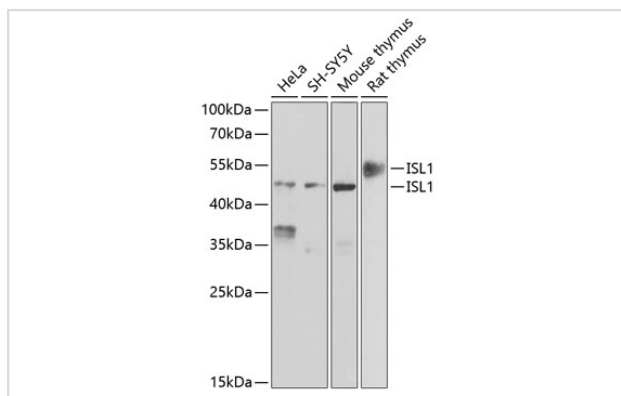
Description

Product Name	ISL1 antibody
Host Species	Rabbit
Clonality	Polyclonal
Purification	Antibodies were purified by affinity purification using immunogen.
Applications	WB
Species Reactivity	Human,Mouse,Rat
Specificity	The antibody detects endogenous level of total ISL1 protein.
Immunogen Type	Recombinant Protein
Immunogen Description	Recombinant protein of human ISL1.
Target Name	ISL1
Other Names	Isl-1; ISLET1;
Accession No.	Swiss-Prot#: P61371NCBI Gene ID: 3670
Uniprot	P61371
GeneID	3670;
SDS-PAGE MW	39kd
Concentration	1.0mg/ml
Formulation	Supplied at 1.0mg/mL in phosphate buffered saline (without Mg ²⁺ and Ca ²⁺), pH 7.4, 150mM NaCl, 0.02% sodium azide and 50% glycerol.
Storage	Store at -20°C

Application Details

WB 1:500 - 1:2000

Images



Western blot analysis of extracts of various cell lines, using ISL1 at 1:500 dilution.

Background

This gene encodes a member of the LIM/homeodomain family of transcription factors. The encoded protein binds to the enhancer region of the insulin gene, among others, and may play an important role in regulating insulin gene expression. The encoded protein is central to the development of pancreatic cell lineages and may also be required for motor neuron generation. Mutations in this gene have been associated with maturity-onset diabetes of the young.

Note: This product is for in vitro research use only