

RCVRN antibody

Catalog No: #38883

Package Size: #38883-1 50ul #38883-2 100ul

Orders: order@signalwayantibody.com

Support: tech@signalwayantibody.com

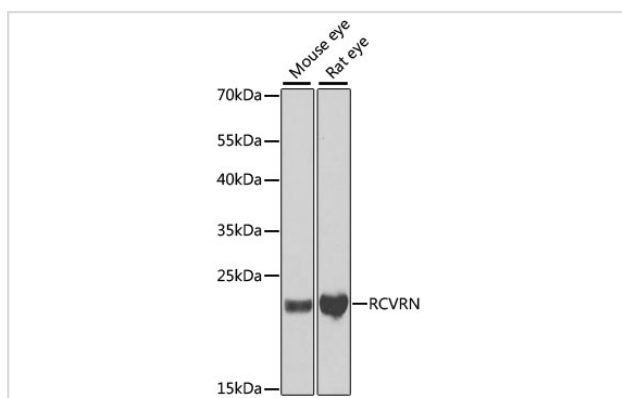
Description

Product Name	RCVRN antibody
Host Species	Rabbit
Clonality	Polyclonal
Purification	Antibodies were purified by affinity purification using immunogen.
Applications	WB,IHC,IF
Species Reactivity	Human,Mouse,Rat
Specificity	The antibody detects endogenous level of total RCVRN protein.
Immunogen Type	Recombinant Protein
Immunogen Description	Recombinant protein of human RCVRN.
Target Name	RCVRN
Other Names	RCV1;
Accession No.	Swiss-Prot#: P35243NCBI Gene ID: 5957
Uniprot	P35243
GeneID	5957;
SDS-PAGE MW	23kd
Concentration	1.0mg/ml
Formulation	Supplied at 1.0mg/mL in phosphate buffered saline (without Mg ²⁺ and Ca ²⁺), pH 7.4, 150mM NaCl, 0.02% sodium azide and 50% glycerol.
Storage	Store at -20°C

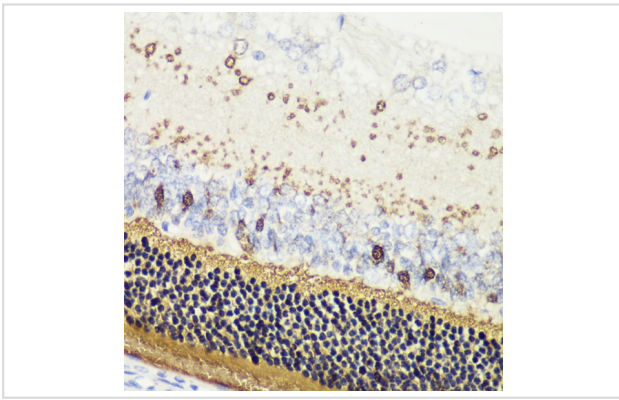
Application Details

WB 1:500 - 1:2000 IHC 1:50 - 1:200 IF 1:10 - 1:100

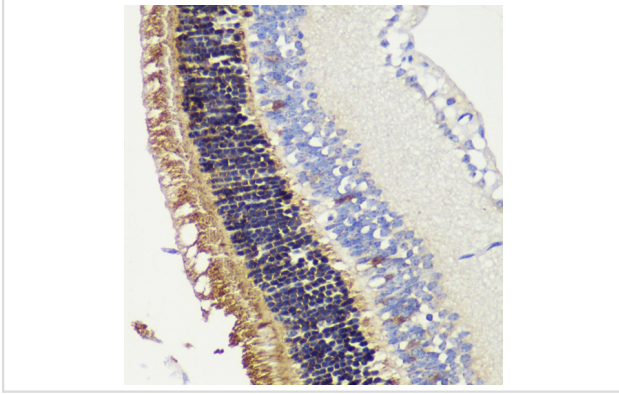
Images



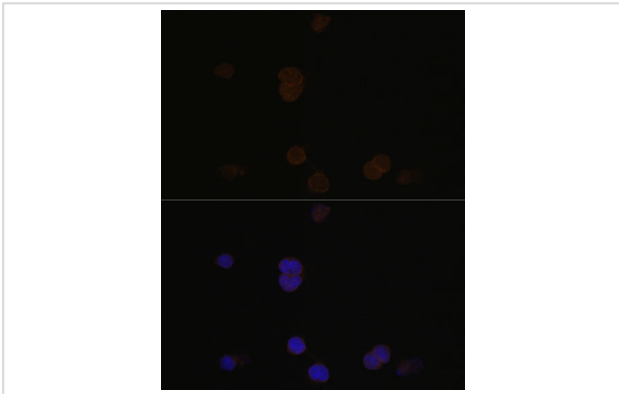
Western blot analysis of extracts of various cell lines, using RCVRN at 1:1000 dilution.



Immunohistochemistry of paraffin-embedded rat retina using RCVRN at dilution of 1:200 (40x lens).



Immunohistochemistry of paraffin-embedded mouse retina using RCVRN at dilution of 1:200 (40x lens).



Immunofluorescence analysis of Y79 cells using RCVRN at dilution of 1:100. Blue: DAPI for nuclear staining.

Background

This gene encodes a member of the recoverin family of neuronal calcium sensors. The encoded protein contains three calcium-binding EF-hand domains and may prolong the termination of the phototransduction cascade in the retina by blocking the phosphorylation of photo-activated rhodopsin. Recoverin may be the antigen responsible for cancer-associated retinopathy.

Note: This product is for in vitro research use only