

## SPINT1 antibody

Catalog No: #38890

Package Size: #38890-1 50ul #38890-2 100ul

Orders: [order@signalwayantibody.com](mailto:order@signalwayantibody.com)Support: [tech@signalwayantibody.com](mailto:tech@signalwayantibody.com)

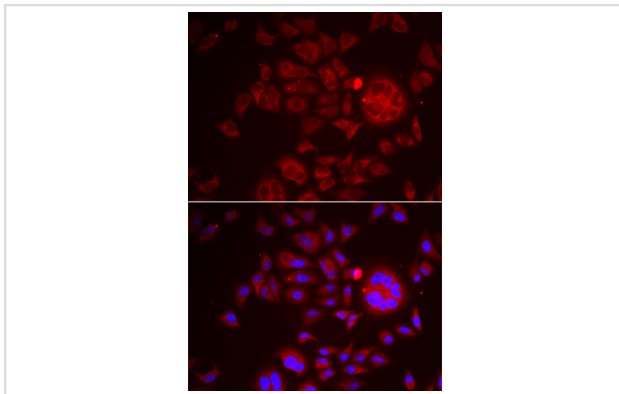
## Description

Product Name	SPINT1 antibody
Host Species	Rabbit
Clonality	Polyclonal
Isotype	IgG
Purification	Affinity purification
Applications	WB,IF
Species Reactivity	Human,Mouse,Rat
Specificity	The antibody detects endogenous level of total SPINT1 protein.
Immunogen Type	Recombinant Protein
Immunogen Description	Recombinant fusion protein of human SPINT1 (NP_003701.1).
Target Name	SPINT1
Other Names	SPINT1;HAI;HAI1;MANSC2
Accession No.	Uniprot:O43278GeneID:6692
Uniprot	O43278
GeneID	6692
SDS-PAGE MW	70kDa
Concentration	1.0mg/ml
Formulation	PBS with 0.02% sodium azide,50% glycerol,pH7.3.
Storage	Store at -20°C. Avoid freeze / thaw cycles.

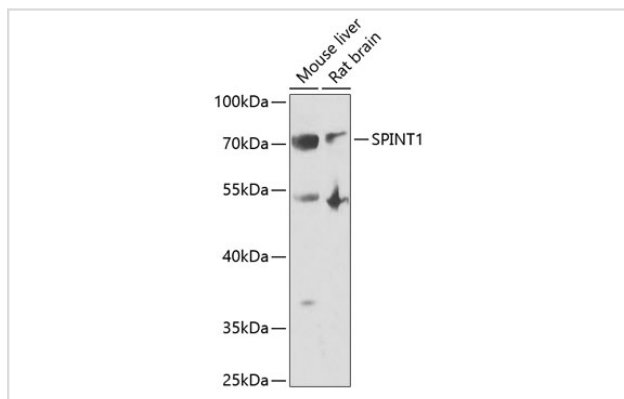
## Application Details

WB  $\square$  1:500 - 1:2000 IF  $\square$  1:50 - 1:100

## Images



Immunofluorescence analysis of HeLa cells using SPINT1 antibody.



Western blot analysis of extracts of various cell lines, using SPINT1 antibody.

## Background

The protein encoded by this gene is a member of the Kunitz family of serine protease inhibitors. The protein is a potent inhibitor specific for HGF activator and is thought to be involved in the regulation of the proteolytic activation of HGF in injured tissues. Alternative splicing results in multiple variants encoding different isoforms.

Note: This product is for in vitro research use only