

SPN antibody

Catalog No: #38891

Package Size: #38891-1 50ul #38891-2 100ul

Orders: order@signalwayantibody.comSupport: tech@signalwayantibody.com

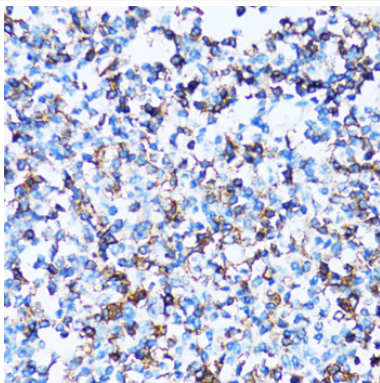
Description

Product Name	SPN antibody
Host Species	Rabbit
Clonality	Polyclonal
Isotype	IgG
Purification	Affinity purification
Applications	WB,IHC,IF
Species Reactivity	Human,Mouse,Rat
Specificity	The antibody detects endogenous level of total SPN protein.
Immunogen Type	Recombinant Protein
Immunogen Description	Recombinant fusion protein of human SPN (NP_003114.1).
Target Name	SPN
Other Names	SPN;CD43;GALGP;GPL115;LSN
Accession No.	Uniprot:P16150GeneID:6693
Uniprot	P16150
GeneID	6693
SDS-PAGE MW	115-130KDa
Concentration	1.0mg/ml
Formulation	PBS with 0.02% sodium azide,50% glycerol,pH7.3.
Storage	Store at -20°C. Avoid freeze / thaw cycles.

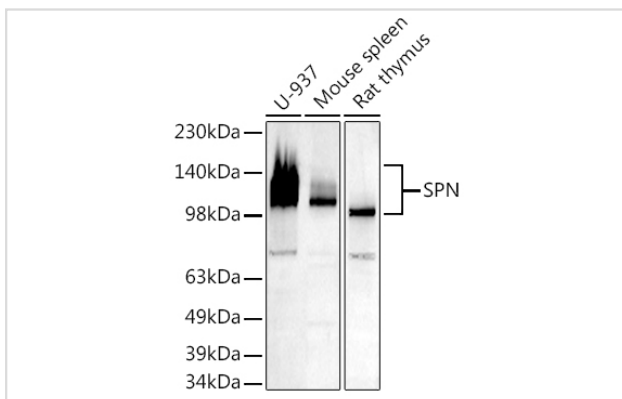
Application Details

WB □ 1:500 - 1:2000 IHC □ 1:50 - 1:200 IF □ 1:50 - 1:200

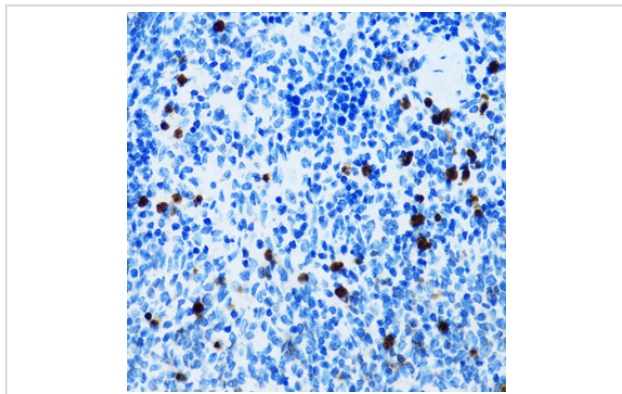
Images



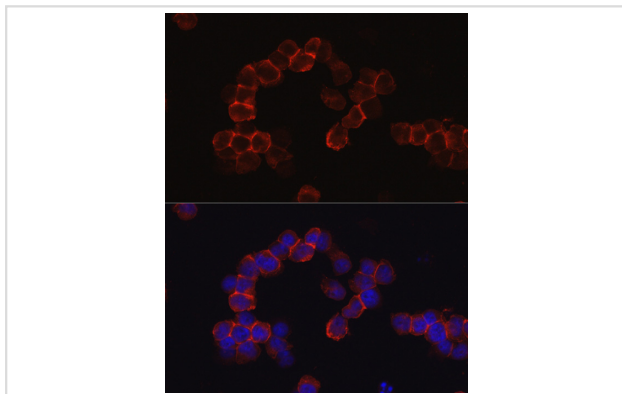
Immunohistochemistry of paraffin-embedded human tonsil using SPN antibody.



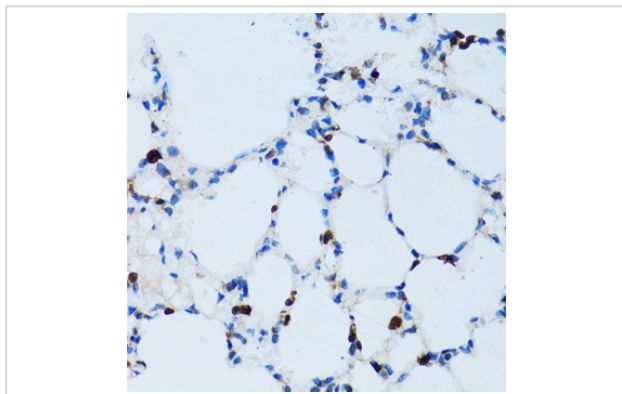
Western blot analysis of extracts of various cell lines, using .



Immunohistochemistry of paraffin-embedded mouse spleen using SPN antibody.



Immunofluorescence analysis of Jurkat cells using SPN Rabbit pAb.



Immunohistochemistry of paraffin-embedded mouse lung using SPN antibody.

Background

The protein encoded by this gene is a major sialoglycoprotein found on the surface of thymocytes, T lymphocytes, monocytes, granulocytes, and some B lymphocytes. It may be part of a physiologic ligand-receptor complex involved in T-cell activation. During T-cell activation, this protein is actively removed from the T-cell-APC (antigen-presenting cell) contact site, suggesting a negative regulatory role in adaptive immune response.

Note: This product is for in vitro research use only