

KLF10 antibody

Catalog No: #38894

Package Size: #38894-1 50ul #38894-2 100ul

Orders: order@signalwayantibody.comSupport: tech@signalwayantibody.com

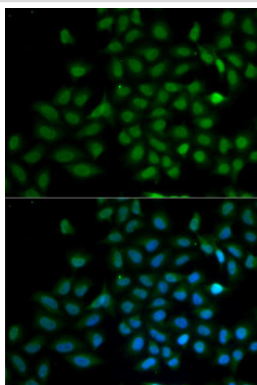
Description

Product Name	KLF10 antibody
Host Species	Rabbit
Clonality	Polyclonal
Purification	Antibodies were purified by affinity purification using immunogen.
Applications	WB,IF
Species Reactivity	Human
Specificity	The antibody detects endogenous level of total KLF10 protein.
Immunogen Type	Recombinant Protein
Immunogen Description	Recombinant protein of human KLF10.
Target Name	KLF10
Other Names	EGRA; TIEG; TIEG1; EGR-alpha;
Accession No.	Swiss-Prot#: Q13118NCBI Gene ID: 7071
Uniprot	Q13118
GeneID	7071;
SDS-PAGE MW	52kd
Concentration	1.0mg/ml
Formulation	Supplied at 1.0mg/mL in phosphate buffered saline (without Mg ²⁺ and Ca ²⁺), pH 7.4, 150mM NaCl, 0.02% sodium azide and 50% glycerol.
Storage	Store at -20°C

Application Details

WB□1:500 - 1:2000IF□1:50 - 1:100

Images



Immunofluorescence analysis of MCF7 cells using KLF10 .
Blue: DAPI for nuclear staining.

Background

This gene encodes a member of a family of proteins that feature C2H2-type zinc finger domains. The encoded protein is a transcriptional repressor that acts as an effector of transforming growth factor beta signaling. Activity of this protein may inhibit the growth of cancers, particularly pancreatic cancer. Alternative splicing results in multiple transcript variants.

Note: This product is for in vitro research use only