

C21orf33 antibody

Catalog No: #38907

Package Size: #38907-1 50ul #38907-2 100ul

Orders: order@signalwayantibody.com

Support: tech@signalwayantibody.com

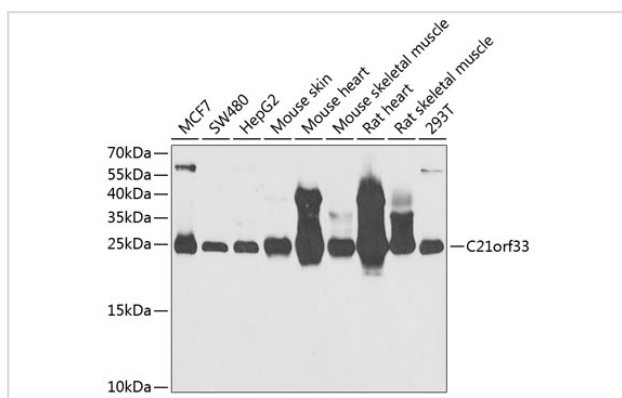
Description

Product Name	C21orf33 antibody
Host Species	Rabbit
Clonality	Polyclonal
Purification	Antibodies were purified by affinity purification using immunogen.
Applications	WB,IF
Species Reactivity	Human,Mouse,Rat
Specificity	The antibody detects endogenous level of total C21orf33 protein.
Immunogen Type	Recombinant Protein
Immunogen Description	Recombinant protein of human C21orf33.
Target Name	C21orf33
Other Names	ES1; HES1; KNPH; KNPI; GT335;
Accession No.	Swiss-Prot#: P30042NCBI Gene ID: 8209
Uniprot	A0A0B4J2D5
GeneID	8209;
SDS-PAGE MW	28kd
Concentration	1.0mg/ml
Formulation	Supplied at 1.0mg/mL in phosphate buffered saline (without Mg ²⁺ and Ca ²⁺), pH 7.4, 150mM NaCl, 0.02% sodium azide and 50% glycerol.
Storage	Store at -20°C

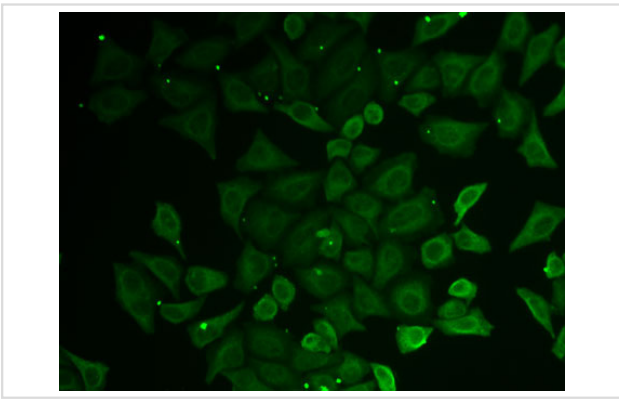
Application Details

WB □ 1:500 - 1:2000IF □ 1:10 - 1:100

Images



Western blot analysis of extracts of various cell lines, using C21orf33 at 1:1000 dilution. Secondary antibody: HRP Goat Anti-Rabbit IgG (H+L) at 1:10000 dilution. Lysates/proteins: 25ug per lane. Blocking buffer: 3% nonfat dry milk in TBST. Detection: ECL Enhanced Kit (RM00021). Exposure time: 60s.



Immunofluorescence analysis of U2OS cells using C21orf33 .

Background

This gene encodes a potential mitochondrial protein that is a member of the DJ-1/Pfpl gene family. This protein is overexpressed in fetal Down syndrome brain. Alternate splicing results in multiple transcript variants.

Note: This product is for in vitro research use only