

SLC5A6 antibody

Catalog No: #38912

Package Size: #38912-1 50ul #38912-2 100ul

Orders: order@signalwayantibody.com

Support: tech@signalwayantibody.com

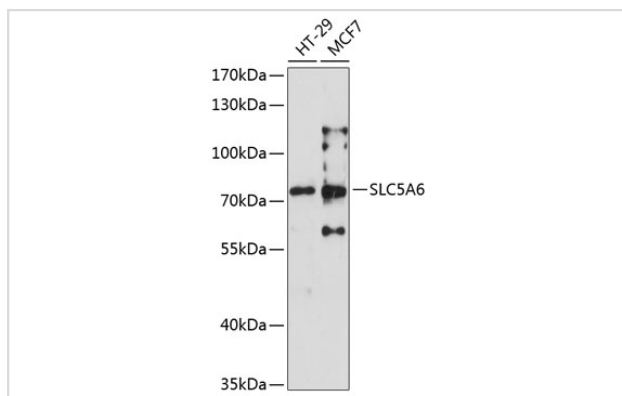
Description

Product Name	SLC5A6 antibody
Host Species	Rabbit
Clonality	Polyclonal
Purification	Antibodies were purified by affinity purification using immunogen.
Applications	WB
Species Reactivity	Human
Specificity	The antibody detects endogenous level of total SLC5A6 protein.
Immunogen Type	Recombinant Protein
Immunogen Description	Recombinant protein of human SLC5A6.
Target Name	SLC5A6
Other Names	SMVT;
Accession No.	Swiss-Prot#: Q9Y289NCBI Gene ID: 8884
Uniprot	Q9Y289
GeneID	8884;
SDS-PAGE MW	68kd
Concentration	1.0mg/ml
Formulation	Supplied at 1.0mg/mL in phosphate buffered saline (without Mg ²⁺ and Ca ²⁺), pH 7.4, 150mM NaCl, 0.02% sodium azide and 50% glycerol.
Storage	Store at -20°C

Application Details

WB □ 1:500 - 1:2000

Images



Western blot analysis of extracts of various cell lines, using SLC5A6 at 1:3000 dilution. Secondary antibody: HRP Goat Anti-Rabbit IgG (H+L) at 1:10000 dilution. Lysates/proteins: 25ug per lane. Blocking buffer: 3% nonfat dry milk in TBST. Detection: ECL Enhanced Kit (RM00021). Exposure time: 90s.

Background

Transports pantothenate, biotin and lipoate in the presence of sodium.

Note: This product is for in vitro research use only