

H6PD antibody

Catalog No: #38918

Package Size: #38918-1 50ul #38918-2 100ul

Orders: order@signalwayantibody.comSupport: tech@signalwayantibody.com

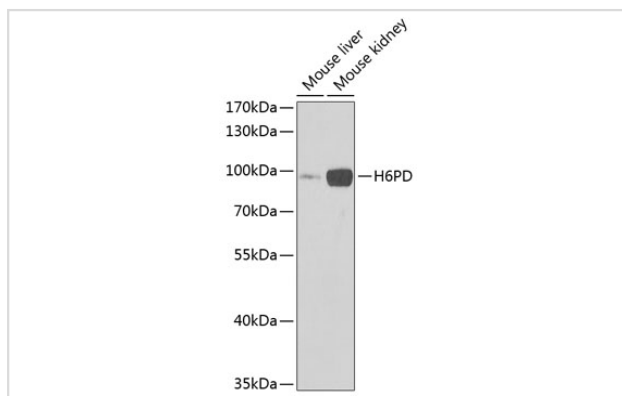
Description

Product Name	H6PD antibody
Host Species	Rabbit
Clonality	Polyclonal
Isotype	IgG
Purification	Affinity purification
Applications	WB
Species Reactivity	Human,Mouse,Rat
Specificity	The antibody detects endogenous level of total H6PD protein.
Immunogen Type	Recombinant Protein
Immunogen Description	Recombinant fusion protein of human H6PD (NP_004276.2).
Target Name	H6PD
Other Names	H6PD;CORTRD1;G6PDH;GDH
Accession No.	Uniprot:O95479GeneID:9563
Uniprot	O95479
GeneID	9563
SDS-PAGE MW	89kDa
Concentration	1.0mg/ml
Formulation	PBS with 0.02% sodium azide,50% glycerol,pH7.3.
Storage	Store at -20°C. Avoid freeze / thaw cycles.

Application Details

WB □ 1:500 - 1:2000

Images



Western blot analysis of extracts of various cell lines, using H6PD Antibody.

Background

There are 2 forms of glucose-6-phosphate dehydrogenase. G form is X-linked and H form, encoded by this gene, is autosomally linked. This H form shows activity with other hexose-6-phosphates, especially galactose-6-phosphate, whereas the G form is specific for glucose-6-phosphate. Both forms are present in most tissues, but H form is not found in red cells.

Note: This product is for in vitro research use only