

SEPHS1 antibody

Catalog No: #38931

Package Size: #38931-1 50ul #38931-2 100ul

Orders: order@signalwayantibody.comSupport: tech@signalwayantibody.com

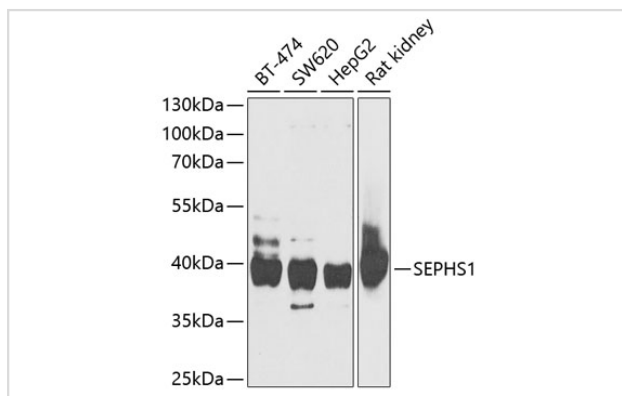
Description

Product Name	SEPHS1 antibody
Host Species	Rabbit
Clonality	Polyclonal
Purification	Antibodies were purified by affinity purification using immunogen.
Applications	WB,IHC,IF
Species Reactivity	Human,Rat
Specificity	The antibody detects endogenous level of total SEPHS1 protein.
Immunogen Type	Recombinant Protein
Immunogen Description	Recombinant protein of human SEPHS1.
Target Name	SEPHS1
Other Names	SPS; SELD; SPS1;
Accession No.	Swiss-Prot#: P49903NCBI Gene ID: 22929
Uniprot	P49903
GeneID	22929;
SDS-PAGE MW	42kd
Concentration	1.0mg/ml
Formulation	Supplied at 1.0mg/mL in phosphate buffered saline (without Mg ²⁺ and Ca ²⁺), pH 7.4, 150mM NaCl, 0.02% sodium azide and 50% glycerol.
Storage	Store at -20°C

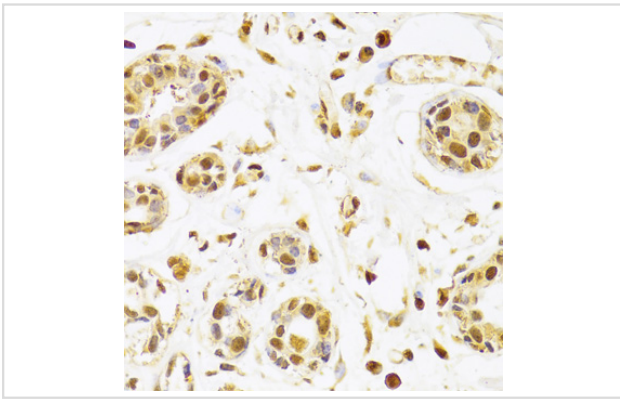
Application Details

WB □ 1:500 - 1:2000 IHC □ 1:50 - 1:200 IF □ 1:10 - 1:100

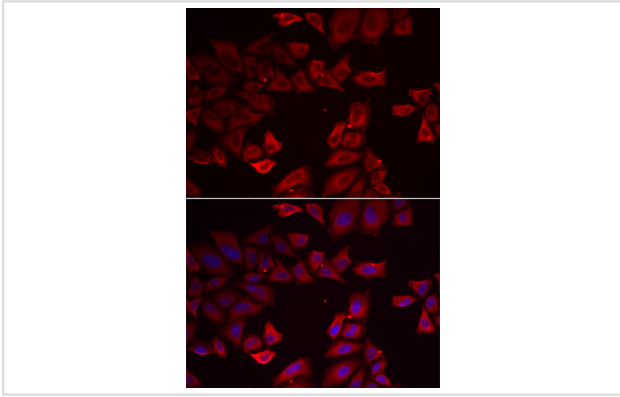
Images



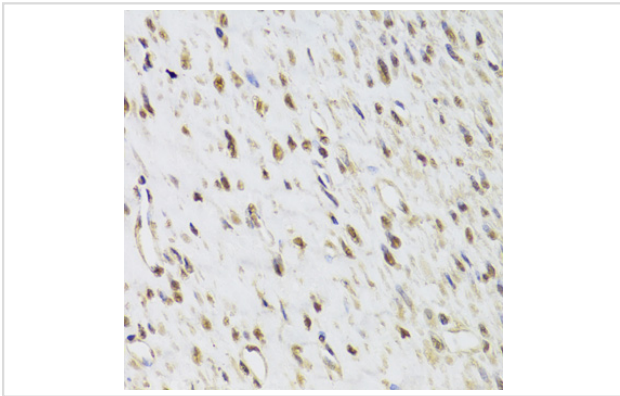
Western blot analysis of extracts of various cell lines, using SEPHS1 at 1:1000 dilution.



Immunohistochemistry of paraffin-embedded human breast using SEPHS1 at dilution of 1:100 (40x lens).



Immunofluorescence analysis of HeLa cells using SEPHS1 .
Blue: DAPI for nuclear staining.



Immunohistochemistry of paraffin-embedded human leiomyoma of uterus using SEPHS1 at dilution of 1:100 (40x lens).

Background

This gene encodes an enzyme that synthesizes selenophosphate from selenide and ATP. Selenophosphate is the selenium donor used to synthesize selenocysteine, which is co-translationally incorporated into selenoproteins at in-frame UGA codons.

Note: This product is for in vitro research use only