

PRAME antibody

Catalog No: #38933

Package Size: #38933-1 50ul #38933-2 100ul

Orders: order@signalwayantibody.comSupport: tech@signalwayantibody.com

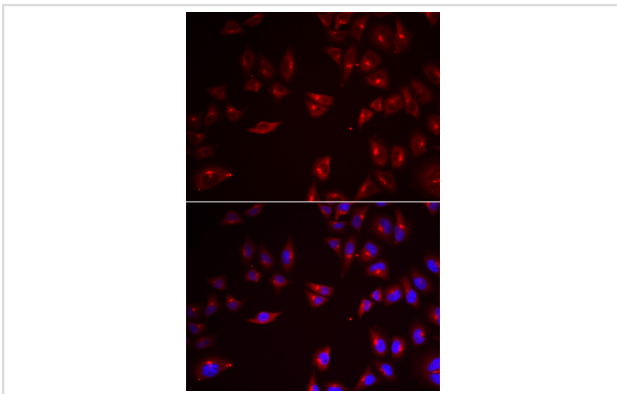
Description

Product Name	PRAME antibody
Host Species	Rabbit
Clonality	Polyclonal
Purification	Antibodies were purified by affinity purification using immunogen.
Applications	WB,IF
Species Reactivity	Human
Specificity	The antibody detects endogenous level of total PRAME protein.
Immunogen Type	Recombinant Protein
Immunogen Description	Recombinant protein of human PRAME.
Target Name	PRAME
Other Names	MAPE; OIP4; CT130; OIP-4;
Accession No.	Swiss-Prot#: P78395NCBI Gene ID: 23532
Uniprot	P78395
GeneID	23532;
SDS-PAGE MW	57kd
Concentration	1.0mg/ml
Formulation	Supplied at 1.0mg/mL in phosphate buffered saline (without Mg ²⁺ and Ca ²⁺), pH 7.4, 150mM NaCl, 0.02% sodium azide and 50% glycerol.
Storage	Store at -20°C

Application Details

WB □ 1:500 - 1:2000IF □ 1:20 - 1:50

Images



Immunofluorescence analysis of U2OS cells using PRAME .
Blue: DAPI for nuclear staining.

Background

This gene encodes an antigen that is preferentially expressed in human melanomas and that is recognized by cytolytic T lymphocytes. It is not expressed in normal tissues, except testis. The encoded protein acts as a repressor of retinoic acid receptor, and likely confers a growth advantage to cancer cells via this function. Alternative splicing results in multiple transcript variants.

Note: This product is for in vitro research use only