

## NRBF2 antibody

Catalog No: #38939

Package Size: #38939-1 50ul #38939-2 100ul

Orders: order@signalwayantibody.com

Support: tech@signalwayantibody.com

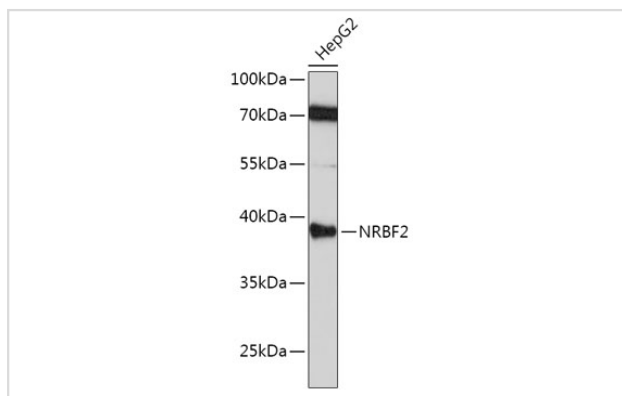
## Description

Product Name	NRBF2 antibody
Host Species	Rabbit
Clonality	Polyclonal
Purification	Antibodies were purified by affinity purification using immunogen.
Applications	WB,IF
Species Reactivity	Human,Mouse,Rat
Specificity	The antibody detects endogenous level of total NRBF2 protein.
Immunogen Type	Recombinant Protein
Immunogen Description	Recombinant protein of human NRBF2.
Target Name	NRBF2
Other Names	COPR1; COPR2; NRBF-2;
Accession No.	Swiss-Prot#: Q96F24NCBI Gene ID: 29982
Uniprot	Q96F24
GeneID	29982;
SDS-PAGE MW	32kd
Concentration	1.0mg/ml
Formulation	Supplied at 1.0mg/mL in phosphate buffered saline (without Mg <sup>2+</sup> and Ca <sup>2+</sup> ), pH 7.4, 150mM NaCl, 0.02% sodium azide and 50% glycerol.
Storage	Store at -20°C

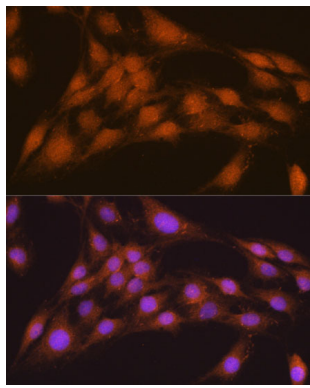
## Application Details

WB □ 1:500 - 1:2000IF □ 1:10 - 1:100

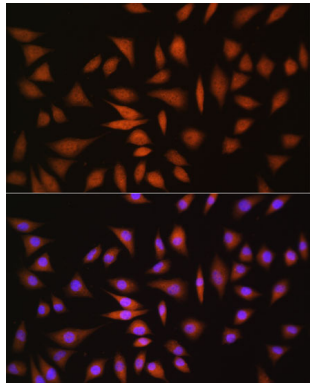
## Images



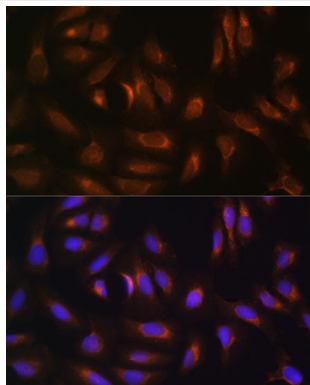
Western blot analysis of extracts of HepG2 cells, using NRBF2 at 1:1000 dilution.



Immunofluorescence analysis of C6 cells using NRBF2 at dilution of 1:100. Blue: DAPI for nuclear staining.



Immunofluorescence analysis of L929 cells using NRBF2 at dilution of 1:100. Blue: DAPI for nuclear staining.



Immunofluorescence analysis of U-2 OS cells using NRBF2 at dilution of 1:100. Blue: DAPI for nuclear staining.

## Background

May modulate transcriptional activation by target nuclear receptors. Can act as transcriptional activator

Note: This product is for in vitro research use only