

AGPAT1 antibody

Catalog No: #38971

Package Size: #38971-1 50ul #38971-2 100ul

Orders: order@signalwayantibody.com

Support: tech@signalwayantibody.com

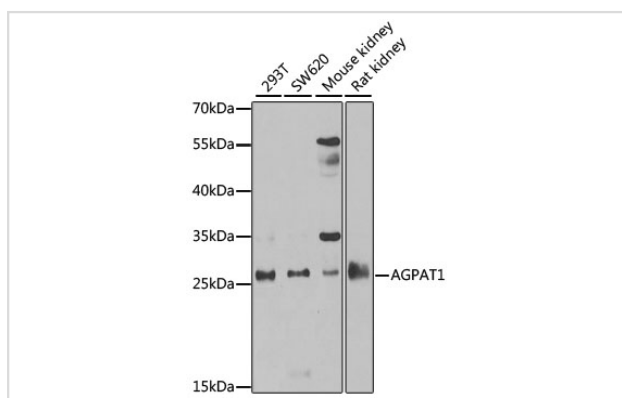
Description

Product Name	AGPAT1 antibody
Host Species	Rabbit
Clonality	Polyclonal
Purification	Antibodies were purified by affinity purification using immunogen.
Applications	WB
Species Reactivity	Human,Mouse,Rat
Specificity	The antibody detects endogenous level of total AGPAT1 protein.
Immunogen Type	Recombinant Protein
Immunogen Description	Recombinant protein of human AGPAT1.
Target Name	AGPAT1
Other Names	G15; LPAATA; 1-AGPAT1; LPAAT-alpha;
Accession No.	Swiss-Prot#: Q99943NCBI Gene ID: 10554
Uniprot	Q99943
GeneID	10554;
SDS-PAGE MW	31kd
Concentration	1.0mg/ml
Formulation	Supplied at 1.0mg/mL in phosphate buffered saline (without Mg ²⁺ and Ca ²⁺), pH 7.4, 150mM NaCl, 0.02% sodium azide and 50% glycerol.
Storage	Store at -20°C

Application Details

WB □ 1:500 - 1:2000IP □ 1:50 - 1:100

Images



Western blot analysis of extracts of various cell lines, using AGPAT1 at 1:1000 dilution.

Background

This gene encodes an enzyme that converts lysophosphatidic acid (LPA) into phosphatidic acid (PA). LPA and PA are two phospholipids involved in signal transduction and in lipid biosynthesis in cells. This enzyme localizes to the endoplasmic reticulum. This gene is located in the class III region of the human major histocompatibility complex. Alternative splicing results in two transcript variants encoding the same protein.

Note: This product is for in vitro research use only