

ALAS1 antibody

Catalog No: #38975

Package Size: #38975-1 50ul #38975-2 100ul

Orders: order@signalwayantibody.com

Support: tech@signalwayantibody.com

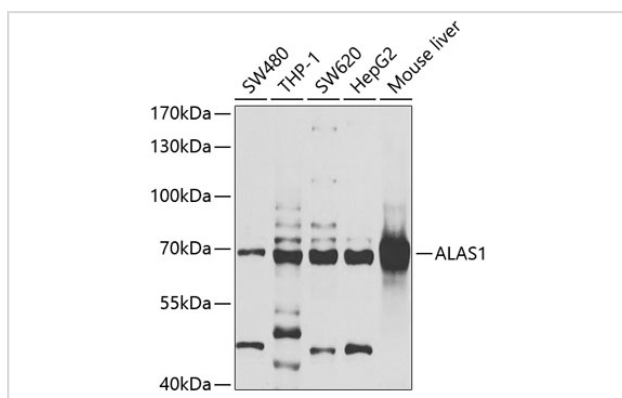
Description

Product Name	ALAS1 antibody
Host Species	Rabbit
Clonality	Polyclonal
Purification	Antibodies were purified by affinity purification using immunogen.
Applications	WB
Species Reactivity	Human,Mouse,Rat
Specificity	The antibody detects endogenous level of total ALAS1 protein.
Immunogen Type	Recombinant Protein
Immunogen Description	Recombinant protein of human ALAS1.
Target Name	ALAS1
Other Names	ALAS; MIG4; ALAS3; ALASH;
Accession No.	Swiss-Prot#: P13196NCBI Gene ID: 211
Uniprot	P13196
GeneID	211;
SDS-PAGE MW	70kd
Concentration	1.0mg/ml
Formulation	Supplied at 1.0mg/mL in phosphate buffered saline (without Mg ²⁺ and Ca ²⁺), pH 7.4, 150mM NaCl, 0.02% sodium azide and 50% glycerol.
Storage	Store at -20°C

Application Details

WB □ 1:500 - 1:2000

Images



Western blot analysis of extracts of various cell lines, using ALAS1 at 1:1000 dilution.

Background

This gene encodes the mitochondrial enzyme which catalyzes the rate-limiting step in heme (iron-protoporphyrin) biosynthesis. The enzyme encoded by this gene is the housekeeping enzyme; a separate gene encodes a form of the enzyme that is specific for erythroid tissue. The level of the mature encoded protein is regulated by heme: high levels of heme down-regulate the mature enzyme in mitochondria while low heme levels up-regulate. A pseudogene of this gene is located on chromosome 12. Multiple alternatively spliced variants, encoding the same protein, have been identified.

Note: This product is for in vitro research use only