

## ALAS2 antibody

Catalog No: #38976

Package Size: #38976-1 50ul #38976-2 100ul

Orders: order@signalwayantibody.com

Support: tech@signalwayantibody.com

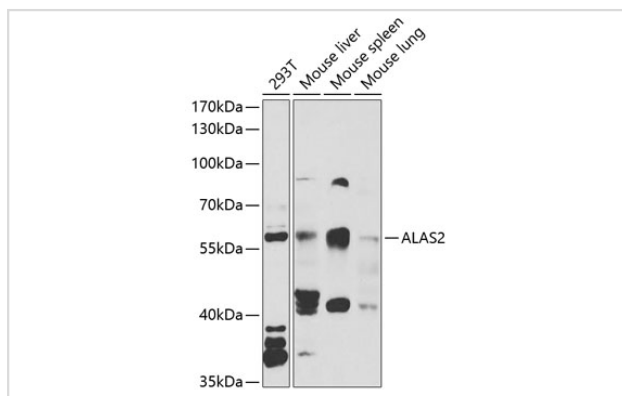
## Description

Product Name	ALAS2 antibody
Host Species	Rabbit
Clonality	Polyclonal
Isotype	IgG
Purification	Affinity purification
Applications	WB
Species Reactivity	Human,Mouse,Rat
Specificity	The antibody detects endogenous level of total ALAS2 protein.
Immunogen Type	Recombinant Protein
Immunogen Description	Recombinant fusion protein of human ALAS2 (NP_001033057.1).
Target Name	ALAS2
Other Names	ALAS2;ALAS-E;ALASE;ANH1;ASB;SIDBA1;XLDPP;XLEPP;XLSA
Accession No.	Uniprot:P22557GeneID:212
Uniprot	P22557
GeneID	212
SDS-PAGE MW	60kDa
Concentration	1.0mg/ml
Formulation	PBS with 0.02% sodium azide,50% glycerol,pH7.3.
Storage	Store at -20°C. Avoid freeze / thaw cycles.

## Application Details

WB □ 1:500 - 1:2000

## Images



Western blot analysis of extracts of various cell lines, using ALAS2 antibody.

## Background

---

The product of this gene specifies an erythroid-specific mitochondrially located enzyme. The encoded protein catalyzes the first step in the heme biosynthetic pathway. Defects in this gene cause X-linked pyridoxine-responsive sideroblastic anemia. Alternatively spliced transcript variants encoding different isoforms have been identified.

---

Note: This product is for in vitro research use only