

## ASF1A antibody

Catalog No: #38981

Package Size: #38981-1 50ul #38981-2 100ul

Orders: [order@signalwayantibody.com](mailto:order@signalwayantibody.com)Support: [tech@signalwayantibody.com](mailto:tech@signalwayantibody.com)

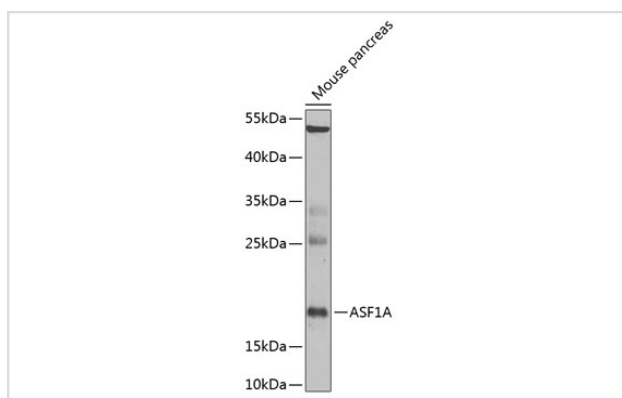
## Description

Product Name	ASF1A antibody
Host Species	Rabbit
Clonality	Polyclonal
Isotype	IgG
Purification	Affinity purification
Applications	WB
Species Reactivity	Human,Mouse
Specificity	The antibody detects endogenous level of total ASF1A protein.
Immunogen Type	Recombinant Protein
Immunogen Description	Recombinant fusion protein of human ASF1A (NP_054753.1).
Target Name	ASF1A
Other Names	ASF1A;CGI-98;CIA;HSPC146
Accession No.	Uniprot:Q9Y294GeneID:25842
Uniprot	Q9Y294
GeneID	25842
SDS-PAGE MW	23kDa
Concentration	1.0mg/ml
Formulation	PBS with 0.02% sodium azide,50% glycerol,pH7.3.
Storage	Store at -20°C. Avoid freeze / thaw cycles.

## Application Details

WB □ 1:500 - 1:2000

## Images



Western blot analysis of extracts of mouse pancreas, using ASF1A Antibody.

## Background

---

This gene encodes a member of the H3/H4 family of histone chaperone proteins and is similar to the anti-silencing function-1 gene in yeast. The protein is a key component of a histone donor complex that functions in nucleosome assembly. It interacts with histones H3 and H4, and functions together with a chromatin assembly factor during DNA replication and repair.

---

Note: This product is for in vitro research use only