

# ATOH1 antibody

Catalog No: #38983

Package Size: #38983-1 50ul #38983-2 100ul

Orders: [order@signalwayantibody.com](mailto:order@signalwayantibody.com)Support: [tech@signalwayantibody.com](mailto:tech@signalwayantibody.com)

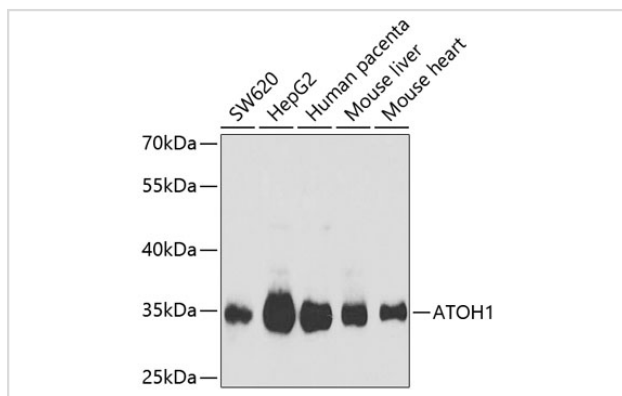
## Description

Product Name	ATOH1 antibody
Host Species	Rabbit
Clonality	Polyclonal
Isotype	IgG
Purification	Affinity purification
Applications	WB
Species Reactivity	Human,Mouse
Specificity	The antibody detects endogenous level of total ATOH1 protein.
Immunogen Type	Recombinant Protein
Immunogen Description	Recombinant fusion protein of human ATOH1 (NP_005163.1).
Target Name	ATOH1
Other Names	ATOH1;ATH1;HATH1;MATH-1;bHLHa14
Accession No.	Uniprot:Q92858GeneID:474
Uniprot	Q92858
GeneID	474
SDS-PAGE MW	35kDa
Concentration	1.0mg/ml
Formulation	PBS with 0.02% sodium azide,50% glycerol,pH7.3.
Storage	Store at -20°C. Avoid freeze / thaw cycles.

## Application Details

WB □ 1:500 - 1:2000

## Images



Western blot analysis of extracts of various cell lines, using ATOH1 Antibody.

## Background

---

This protein belongs to the basic helix-loop-helix (BHLH) family of transcription factors. It activates E-box dependent transcription along with E47.

---

Note: This product is for in vitro research use only