

BAP1 antibody

Catalog No: #38986

Package Size: #38986-1 50ul #38986-2 100ul

Orders: order@signalwayantibody.com

Support: tech@signalwayantibody.com

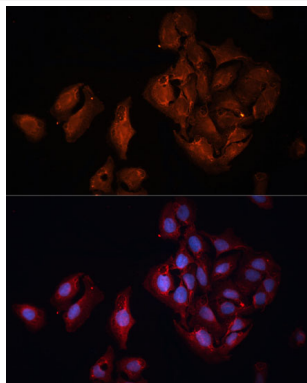
Description

Product Name	BAP1 antibody
Host Species	Rabbit
Clonality	Polyclonal
Purification	Antibodies were purified by affinity purification using immunogen.
Applications	WB,IHC,IF
Species Reactivity	Human,Mouse,Rat
Specificity	The antibody detects endogenous level of total BAP1 protein.
Immunogen Type	Recombinant Protein
Immunogen Description	Recombinant protein of human BAP1.
Target Name	BAP1
Other Names	UCHL2; hucep-6; HUCEP-13;
Accession No.	Swiss-Prot#: Q92560NCBI Gene ID: 8314
Uniprot	Q92560
GeneID	8314;
SDS-PAGE MW	80kd
Concentration	1.0mg/ml
Formulation	Supplied at 1.0mg/mL in phosphate buffered saline (without Mg ²⁺ and Ca ²⁺), pH 7.4, 150mM NaCl, 0.02% sodium azide and 50% glycerol.
Storage	Store at -20°C

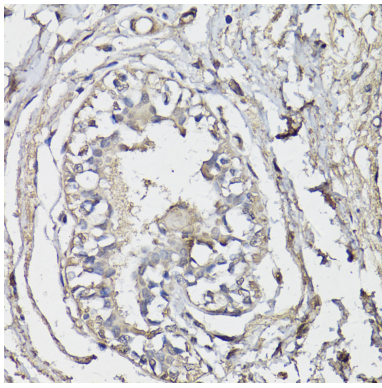
Application Details

WB □ 1:500 - 1:2000 IHC □ 1:50 - 1:200 IF □ 1:50 - 1:200

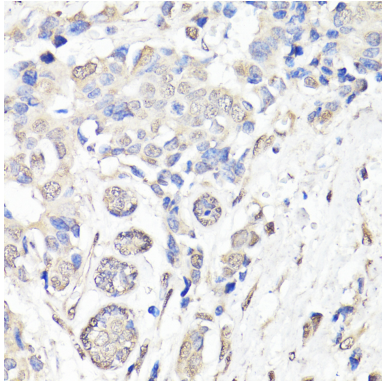
Images



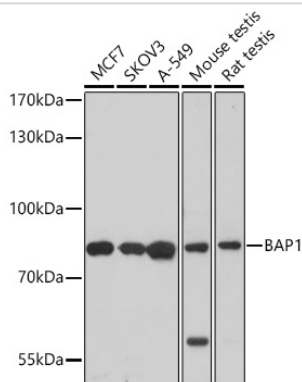
Immunofluorescence analysis of U-2 OS cells using BAP1 Polyclonal at dilution of 1:100 (40x lens). Blue: DAPI for nuclear staining.



Immunohistochemistry of paraffin-embedded human breast using BAP1 at dilution of 1:150 (40x lens).



Immunohistochemistry of paraffin-embedded human breast cancer using BAP1 at dilution of 1:150 (40x lens).



Western blot analysis of extracts of various cell lines, using BAP1 at 1:1000 dilution.

Background

This gene belongs to the ubiquitin C-terminal hydrolase subfamily of deubiquitinating enzymes that are involved in the removal of ubiquitin from proteins. The encoded enzyme binds to the breast cancer type 1 susceptibility protein (BRCA1) via the RING finger domain of the latter and acts as a tumor suppressor. In addition, the enzyme may be involved in regulation of transcription, regulation of cell cycle and growth, response to DNA damage and chromatin dynamics. Germline mutations in this gene may be associated with tumor predisposition syndrome (TPDS), which involves increased risk of cancers including malignant mesothelioma, uveal melanoma and cutaneous melanoma.

Note: This product is for in vitro research use only