

BLMH antibody

Catalog No: #38988

Package Size: #38988-1 50ul #38988-2 100ul

Orders: order@signalwayantibody.com

Support: tech@signalwayantibody.com

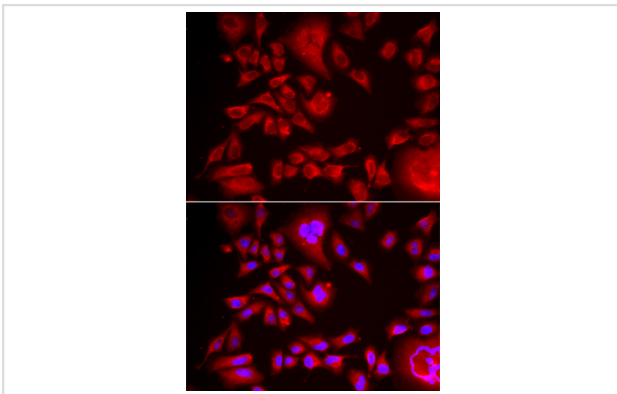
Description

Product Name	BLMH antibody
Host Species	Rabbit
Clonality	Polyclonal
Purification	Antibodies were purified by affinity purification using immunogen.
Applications	WB,IHC,IF
Species Reactivity	Human,Mouse,Rat
Specificity	The antibody detects endogenous level of total BLMH protein.
Immunogen Type	Recombinant Protein
Immunogen Description	Recombinant protein of human BLMH.
Target Name	BLMH
Other Names	BH; BMH;
Accession No.	Swiss-Prot#: Q13867NCBI Gene ID: 642
Uniprot	Q13867
GeneID	642;
SDS-PAGE MW	52kd
Concentration	1.0mg/ml
Formulation	Supplied at 1.0mg/mL in phosphate buffered saline (without Mg ²⁺ and Ca ²⁺), pH 7.4, 150mM NaCl, 0.02% sodium azide and 50% glycerol.
Storage	Store at -20°C

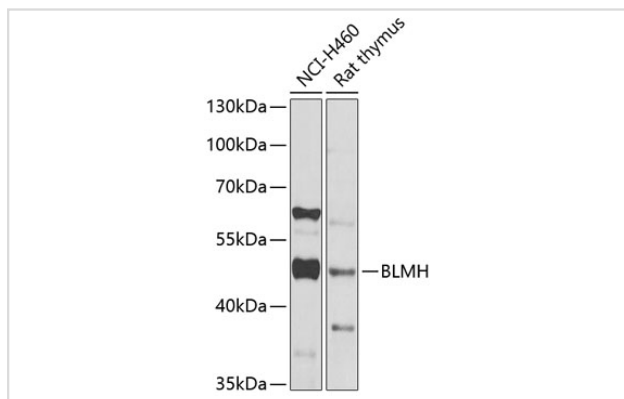
Application Details

WB □ 1:500 - 1:2000 IHC □ 1:50 - 1:200 IF □ 1:20 - 1:50

Images



Immunofluorescence analysis of HeLa cells using BLMH .
Blue: DAPI for nuclear staining.



Western blot analysis of extracts of various cell lines, using BLMH at 1:1000 dilution.

Background

Bleomycin hydrolase (BMH) is a cytoplasmic cysteine peptidase that is highly conserved through evolution; however, the only known activity of the enzyme is metabolic inactivation of the glycopeptide bleomycin (BLM), an essential component of combination chemotherapy regimens for cancer. The protein contains the signature active site residues of the cysteine protease papain superfamily.

Note: This product is for in vitro research use only