

## CARS antibody

Catalog No: #38993

Package Size: #38993-1 50ul #38993-2 100ul

Orders: [order@signalwayantibody.com](mailto:order@signalwayantibody.com)Support: [tech@signalwayantibody.com](mailto:tech@signalwayantibody.com)

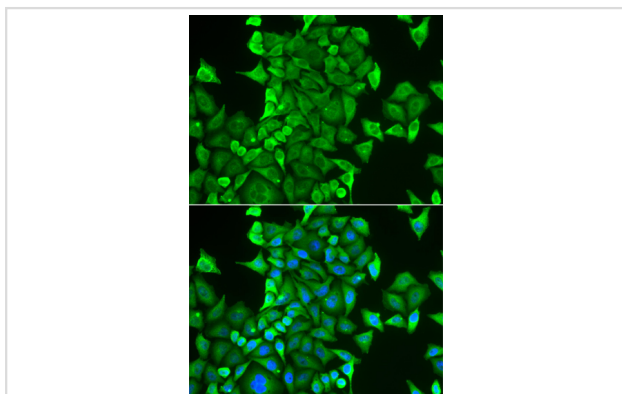
## Description

Product Name	CARS antibody
Host Species	Rabbit
Clonality	Polyclonal
Isotype	IgG
Purification	Affinity purification
Applications	WB,IF
Species Reactivity	Human,Mouse
Specificity	The antibody detects endogenous level of total CARS protein.
Immunogen Type	Recombinant Protein
Immunogen Description	Recombinant fusion protein of human CARS (NP_001742.1).
Target Name	CARS
Other Names	CARS;CARS1;CYSRS;MGC:11246
Accession No.	Uniprot:P49589GenelD:833
Uniprot	P49589
GenelD	833
SDS-PAGE MW	85kDa
Concentration	1.0mg/ml
Formulation	PBS with 0.02% sodium azide,50% glycerol,pH7.3.
Storage	Store at -20°C. Avoid freeze / thaw cycles.

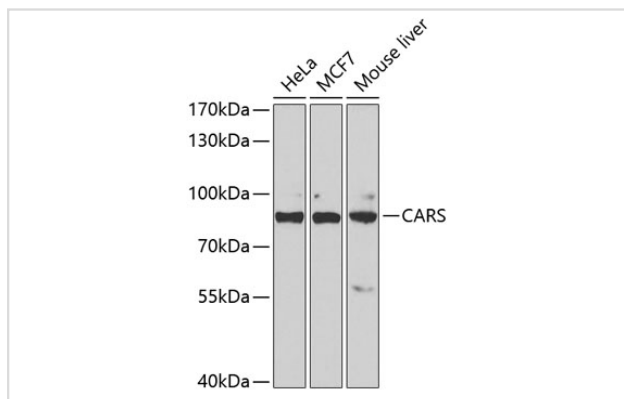
## Application Details

WB □ 1:500 - 1:2000IF □ 1:10 - 1:100

## Images



Immunofluorescence analysis of HeLa cells using CARS antibody.



Western blot analysis of extracts of various cell lines, using CARS antibody.

## Background

This gene encodes a class 1 aminoacyl-tRNA synthetase, cysteinyl-tRNA synthetase. Each of the twenty aminoacyl-tRNA synthetases catalyzes the aminoacylation of a specific tRNA or tRNA isoaccepting family with the cognate amino acid. This gene is one of several located near the imprinted gene domain on chromosome 11p15.5, an important tumor-suppressor gene region. Alterations in this region have been associated with Beckwith-Wiedemann syndrome, Wilms tumor, rhabdomyosarcoma, adrenocortical carcinoma, and lung, ovarian and breast cancers. Alternative splicing of this gene results in multiple transcript variants.

Note: This product is for in vitro research use only