

## CCBL1 antibody

Catalog No: #38995

Package Size: #38995-1 50ul #38995-2 100ul

Orders: [order@signalwayantibody.com](mailto:order@signalwayantibody.com)Support: [tech@signalwayantibody.com](mailto:tech@signalwayantibody.com)

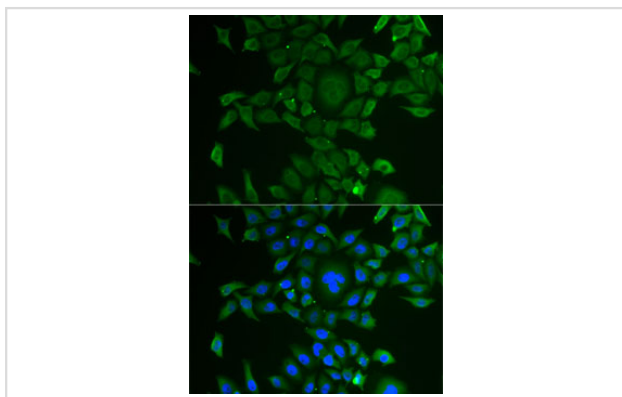
## Description

Product Name	CCBL1 antibody
Host Species	Rabbit
Clonality	Polyclonal
Isotype	IgG
Purification	Affinity purification
Applications	WB,IF
Species Reactivity	Human,Mouse,Rat
Specificity	The antibody detects endogenous level of total CCBL1 protein.
Immunogen Type	Recombinant Protein
Immunogen Description	Recombinant fusion protein of human CCBL1 (NP_001116144.1).
Target Name	CCBL1
Other Names	KYAT1;CCBL1;GTK;KAT1;KATI
Accession No.	Uniprot:Q16773GeneID:883
Uniprot	Q16773
GeneID	883
SDS-PAGE MW	48kDa
Concentration	1.0mg/ml
Formulation	PBS with 0.02% sodium azide,50% glycerol,pH7.3.
Storage	Store at -20°C. Avoid freeze / thaw cycles.

## Application Details

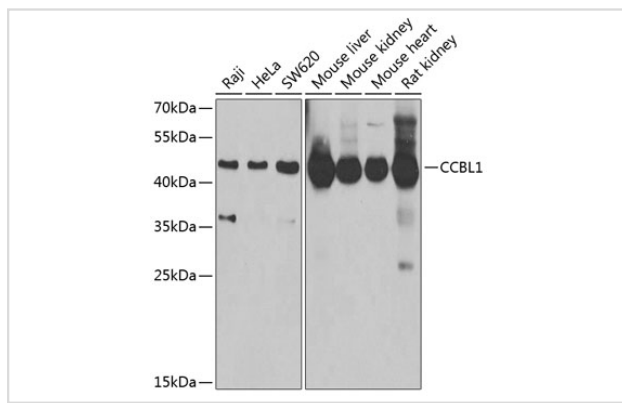
WB □ 1:500 - 1:2000 IF □ 1:10 - 1:100

## Images



Immunofluorescence analysis of U2OS cells using CCBL1 antibody.

Western blot analysis of extracts of various cell lines, using CCBL1 Antibody.



## Background

This gene encodes a cytosolic enzyme that is responsible for the metabolism of cysteine conjugates of certain halogenated alkenes and alkanes. This metabolism can form reactive metabolites leading to nephrotoxicity and neurotoxicity. Increased levels of this enzyme have been linked to schizophrenia. Multiple transcript variants that encode different isoforms have been identified for this gene.

Note: This product is for in vitro research use only