

CCT2 antibody

Catalog No: #38998

Package Size: #38998-1 50ul #38998-2 100ul

Orders: order@signalwayantibody.com

Support: tech@signalwayantibody.com

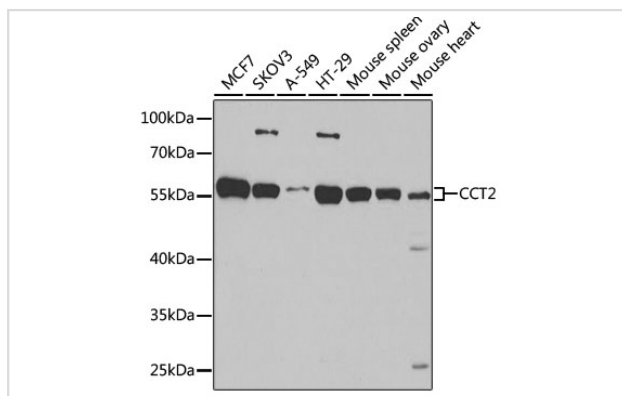
Description

Product Name	CCT2 antibody
Host Species	Rabbit
Clonality	Polyclonal
Purification	Antibodies were purified by affinity purification using immunogen.
Applications	WB,IF
Species Reactivity	Human,Mouse
Specificity	The antibody detects endogenous level of total CCT2 protein.
Immunogen Type	Recombinant Protein
Immunogen Description	Recombinant protein of human CCT2.
Target Name	CCT2
Other Names	CCTB; 99D8.1; PRO1633; CCT-beta; HEL-S-100n; TCP-1-beta;
Accession No.	Swiss-Prot#: P78371NCBI Gene ID: 10576
Uniprot	P78371
GeneID	10576;
SDS-PAGE MW	57kd
Concentration	1.0mg/ml
Formulation	Supplied at 1.0mg/mL in phosphate buffered saline (without Mg ²⁺ and Ca ²⁺), pH 7.4, 150mM NaCl, 0.02% sodium azide and 50% glycerol.
Storage	Store at -20°C

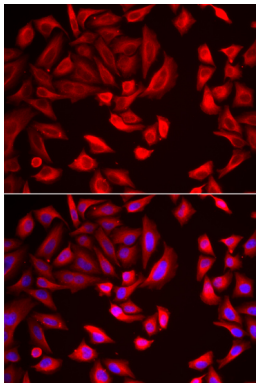
Application Details

WB □ 1:500 - 1:2000IF □ 1:50 - 1:200IP □ 1:50 - 1:100

Images



Western blot analysis of extracts of various cell lines, using CCT2 at 1:1000 dilution.



Immunofluorescence analysis of HeLa cells using CCT2 .
Blue: DAPI for nuclear staining.

Background

The protein encoded by this gene is a molecular chaperone that is a member of the chaperonin containing TCP1 complex (CCT), also known as the TCP1 ring complex (TRiC). This complex consists of two identical stacked rings, each containing eight different proteins. Unfolded polypeptides enter the central cavity of the complex and are folded in an ATP-dependent manner. The complex folds various proteins, including actin and tubulin. Two transcript variants encoding different isoforms have been found for this gene.

Note: This product is for in vitro research use only