

CCT4 antibody

Catalog No: #39000

Package Size: #39000-1 50ul #39000-2 100ul

Orders: order@signalwayantibody.com

Support: tech@signalwayantibody.com

Description

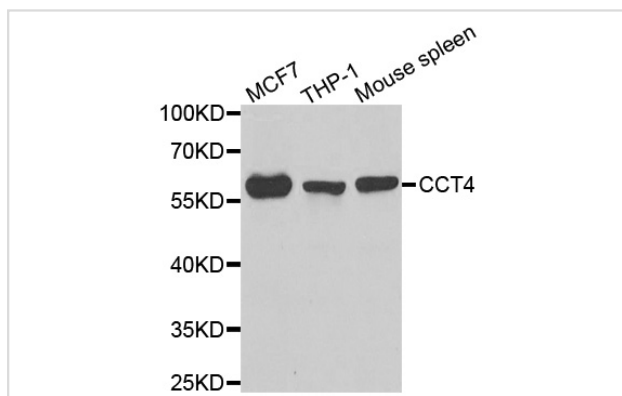
Product Name	CCT4 antibody
Host Species	Rabbit
Clonality	Polyclonal
Purification	Antibodies were purified by affinity purification using immunogen.
Applications	WB IF
Species Reactivity	Hu Ms Rt
Specificity	The antibody detects endogenous level of total CCT4 protein.
Immunogen Type	Recombinant Protein
Immunogen Description	Recombinant protein of human CCT4.
Target Name	CCT4
Other Names	SRB; Cctd; CCT-DELTA;
Accession No.	Swiss-Prot#: P50991NCBI Gene ID: 10575
Uniprot	P50991
GeneID	10575;
SDS-PAGE MW	57kd
Concentration	1.0mg/ml
Formulation	Supplied at 1.0mg/mL in phosphate buffered saline (without Mg ²⁺ and Ca ²⁺), pH 7.4, 150mM NaCl, 0.02% sodium azide and 50% glycerol.
Storage	Store at -20°C

Application Details

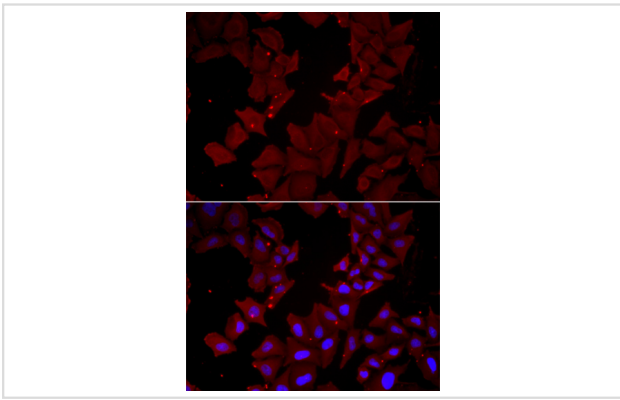
Western blotting: □1:500 - 1:2000

Immunofluorescence: 1:50 - 1:200

Images



Western blot analysis of extracts of various cell lines, using CCT4 antibody.



Immunofluorescence analysis of HeLa cell using CCT4 antibody. Blue: DAPI for nuclear staining.

Background

The chaperonin containing TCP1 (MIM 186980) complex (CCT), also called the TCP1 ring complex, consists of 2 back-to-back rings, each containing 8 unique but homologous subunits, such as CCT4. CCT assists the folding of newly translated polypeptide substrates through multiple rounds of ATP-driven release and rebinding of partially folded intermediate forms. Substrates of CCT include the cytoskeletal proteins actin (see MIM 102560) and tubulin (see MIM 191130), as well as alpha-transducin (MIM 139330) (Won et al., 1998)

Note: This product is for in vitro research use only